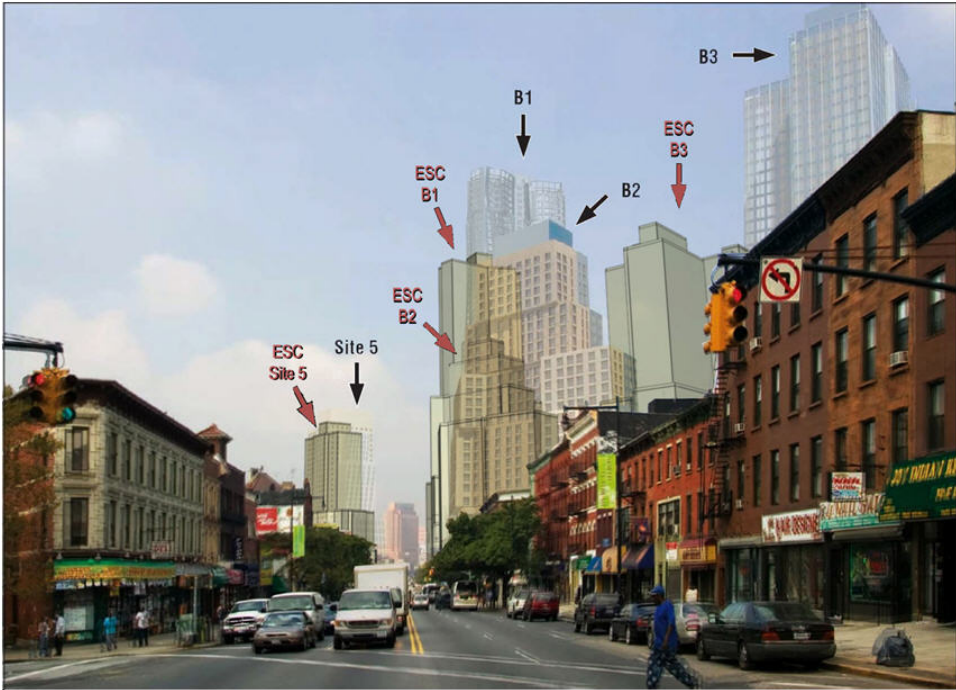


# Atlantic Yards DEIS Review

New York, New York



Photomontages from the DEIS showing proposed buildings mislocated (left) compared to verifiable photo simulations done by the ESC showing buildings in their correct location (right).



An overlay of the ESC verifiable photo simulations and the photomontages from the DEIS showed the magnitude of the errors in the simulations.

**Client:**  
Council of Brooklyn Neighborhoods

**Project Director:**  
George Janes

**Completed:**  
2006

The Environmental Simulation Center, Ltd. (“ESC”) was engaged by the Council of Brooklyn Neighborhoods to review portions of the Atlantic Yards Draft Environmental Impact Statement (“DEIS”). The Atlantic Yards project, at the time was the largest single development ever attempted in New York City, and the DEIS for the project was appropriately complex.

The ESC reviewed the Shadows and the Urban Design & Visual Resources chapters of the Atlantic Yards DEIS. The ESC demonstrated that the photomontages included in the DEIS had very serious flaws, including showing buildings in incorrect locations, at incorrect heights, and cropping and otherwise altering images. The ESC produced new verifiable photo simulations of the proposed development’s buildings in their correct locations and heights. The verifiable photo simulations (individual and comparative) that the ESC produced were included in the formal response to the DEIS and were also a part of the public outreach efforts to communicate the project to the public.