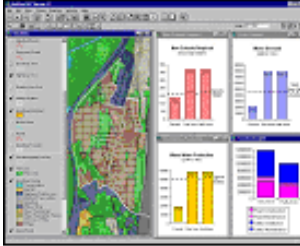


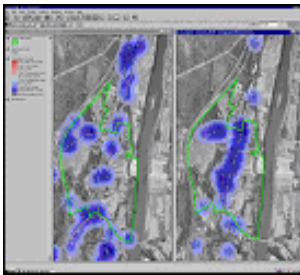
# Community Planning and Simulation Project (CommunityViz™): Development of an Interactive 3D/GIS, Digital Scenario Planning, Urban Design, and Forecasting Software

Vermont and Colorado

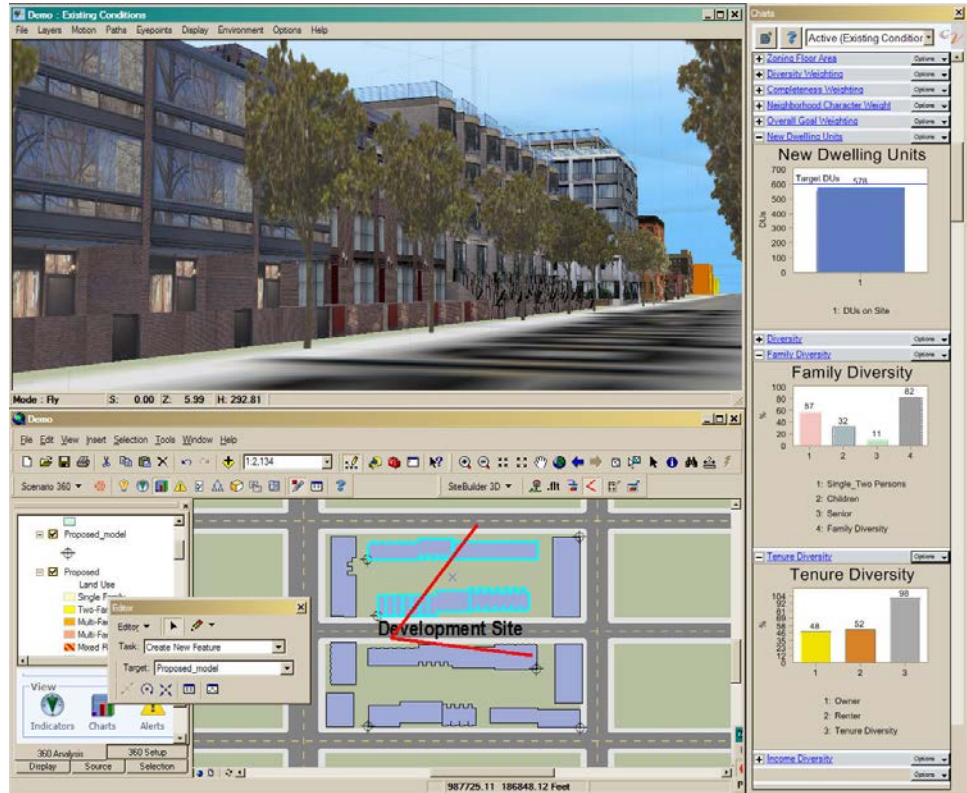
CommunityViz's 3 components:  
Townbuilder, Impact Analysis/  
Scenario Constructor and  
Policy Simulator



A scenario constructor showing how buildout affects infrastructure demands.



A policy simulation showing effects of alternate service boundaries.



The Environmental Simulation Center (ESC) led the development of the first multi-dimensional Planning Decision Support System to be released commercially--CommunityViz™. The concept of the product was to create a tool for planners, designers and lay decision-makers that made all types of data associated with planning issues—words, numbers, and images—mutually accountable to each other in an intuitive, interactive, and visual environment that facilitates the creation, comparison, and evaluation of alternative scenarios and strategies. For the first time, users are able to easily create 3D visualizations linked to GIS data, develop alternative scenarios and forecasts based on both physical layout and policy decisions, and evaluate their impacts.

Over the course of four years, the ESC, with the support of the Orton Family Foundation, assembled and led a development team consisting of PricewaterhouseCoopers, Multigen-Paradigm, and Foresite Consulting. The ESC provided conceptual design, functional specifications, project management, systems engineering, design development, and quality assurance services from project conception through beta testing and the first commercial release of the product in the fall of 2001. Most importantly, by bringing its pioneering expertise in applying information technology to real-world planning issues to the development of the software, the product is now a viable tool being used by planners in many communities throughout the United States.

ESC continues to support the development and application of CommunityViz™ with Placeways, LLC.

## Client:

The Orton Family Foundation  
Placeways, LLC

## Co-Project Directors:

Michael Kwartler  
Bill Roper  
(The Orton Family  
Foundation)  
Doug Walker (Placeways)

## Completed:

2002

["Community Viz™: An Integrated Planning Support System"](#)

["Just in Time Planning: New York + Houston" \(Michael Kwartler, FAIA\), Architectural Design, London, 2005](#)

[Hypothetical Article About Community Planning and Simulation, Michael Kwartler, 2001](#)