



ENVIRONMENTAL  
SIMULATION  
CENTER, LTD.

116 West 29th Street  
New York, NY 10001

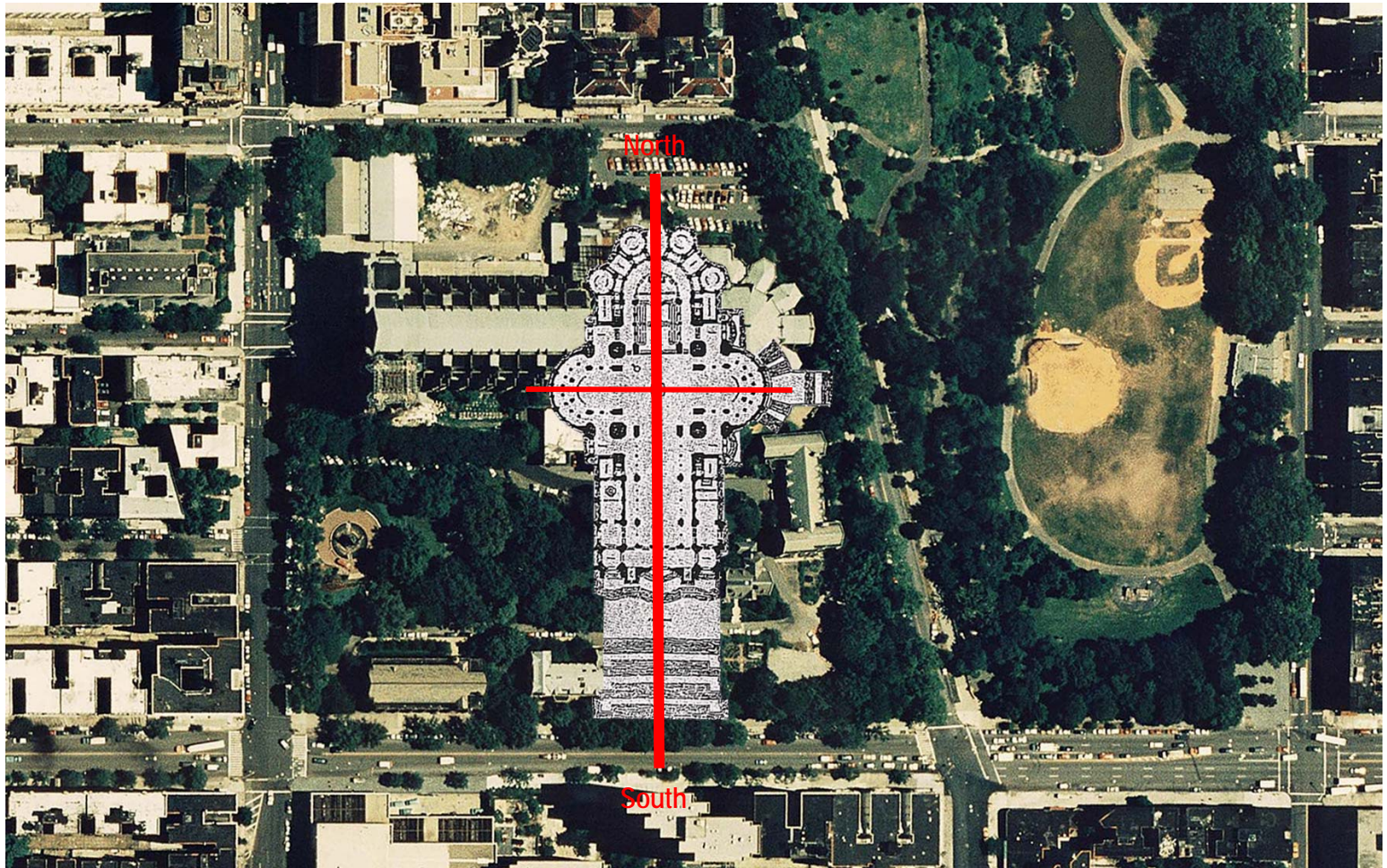
212.279.1851 phone  
212.465.2081 fax  
<http://www.simcenter.org>

**The Cathedral Church  
of  
St. John the Divine**

**14 May 2004**



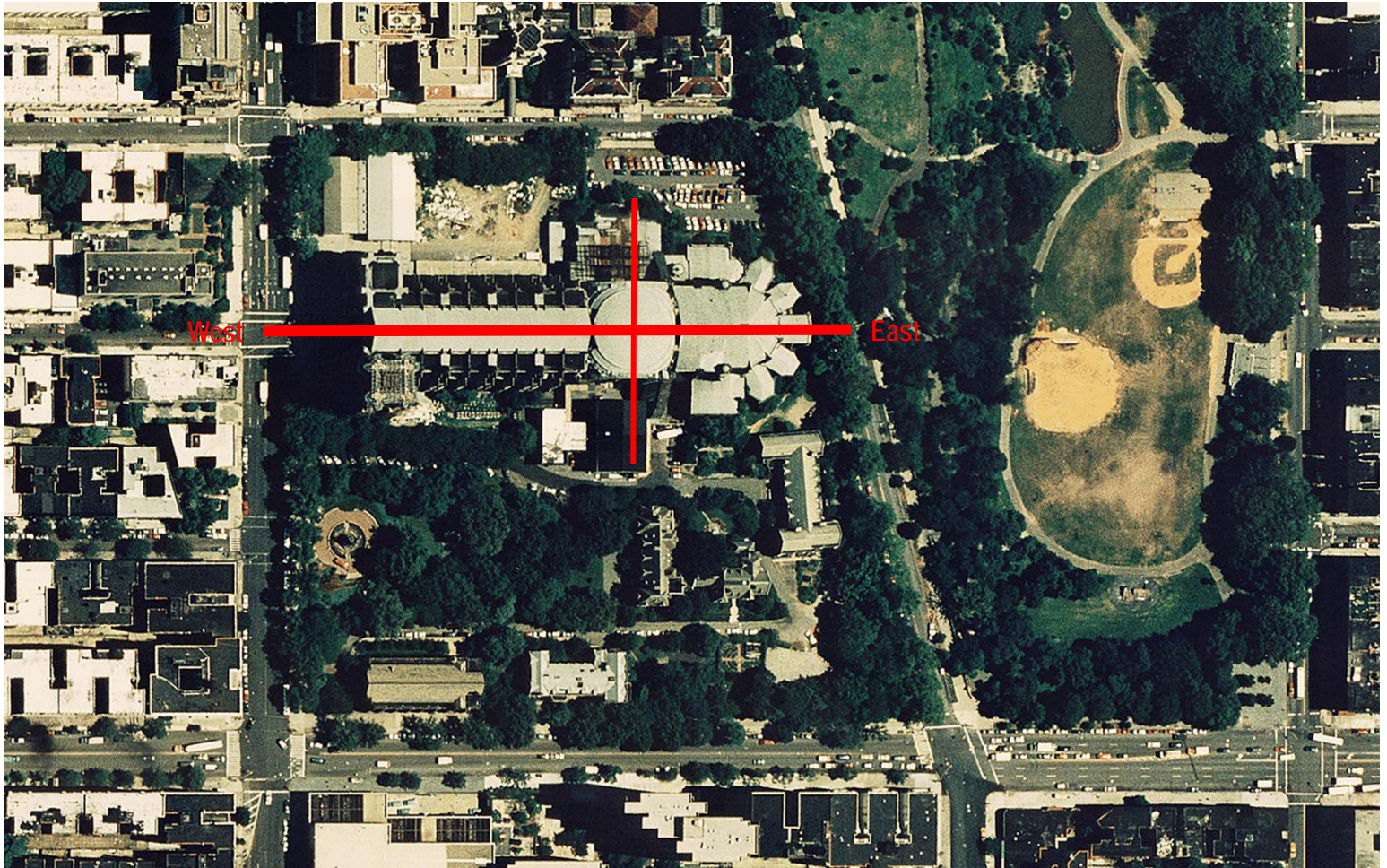
ENVIRONMENTAL  
SIMULATION  
CENTER, LTD.



Proposed site plan  
(Heins & La Farge's competition entry, 1891)



ENVIRONMENTAL  
SIMULATION  
CENTER, LTD.



Current site plan



ENVIRONMENTAL  
SIMULATION  
CENTER, LTD.



St. John - New York, USA



Bourges, France

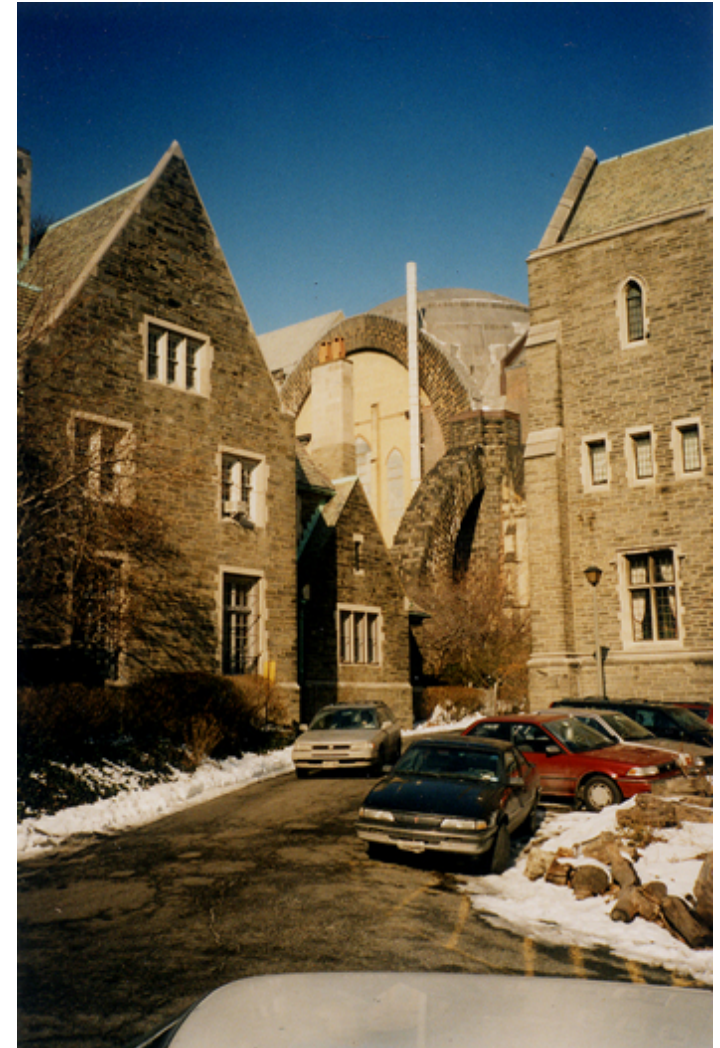
## Urban Cathedral



ENVIRONMENTAL  
SIMULATION  
CENTER, LTD.



St. John - New York, USA



## Urban Cathedral





ENVIRONMENTAL  
SIMULATION  
CENTER, LTD.



St. John - New York, USA



## Urban Cathedral





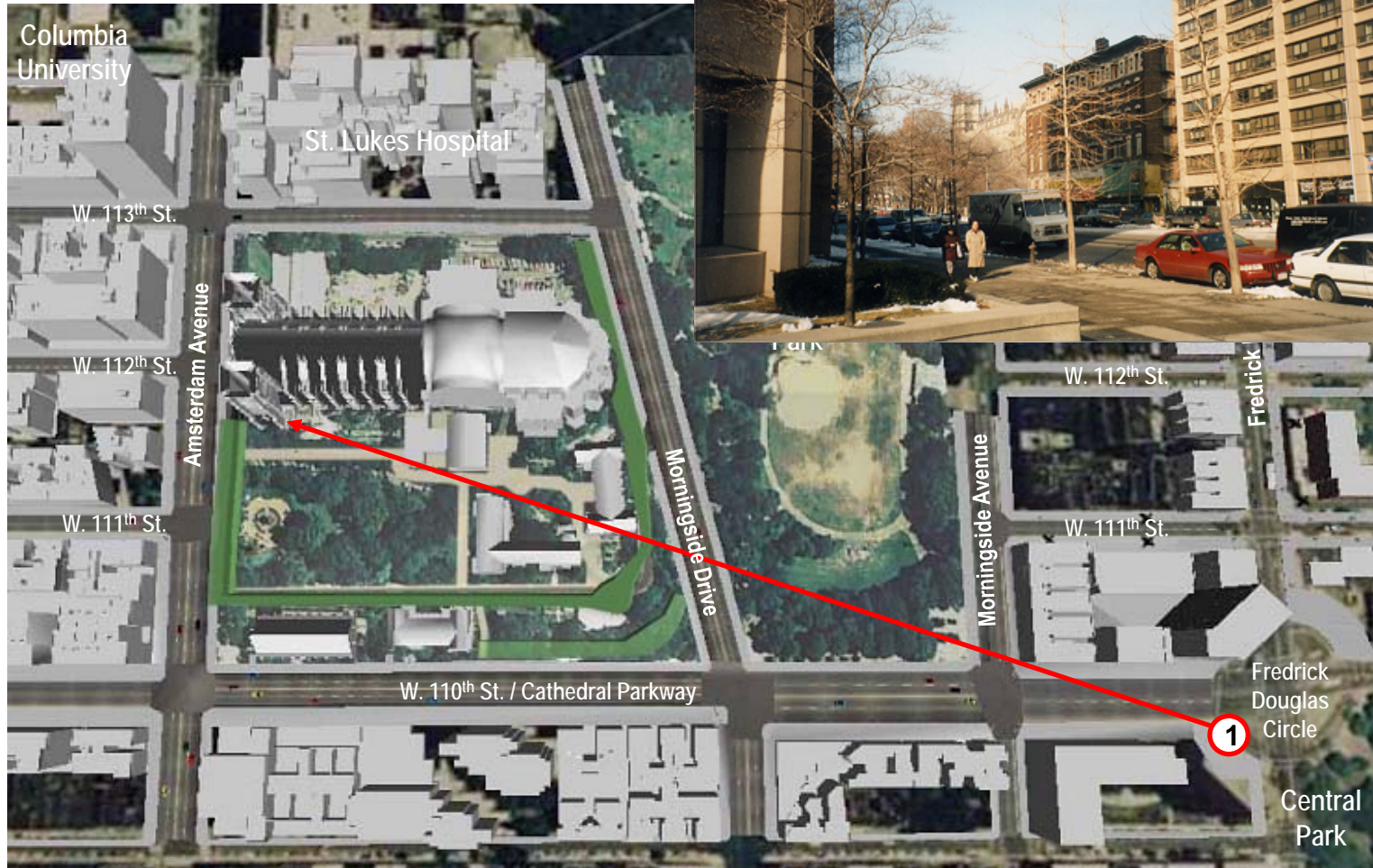
ENVIRONMENTAL  
SIMULATION  
CENTER, LTD.



Key View Locations



ENVIRONMENTAL  
SIMULATION  
CENTER, LTD.

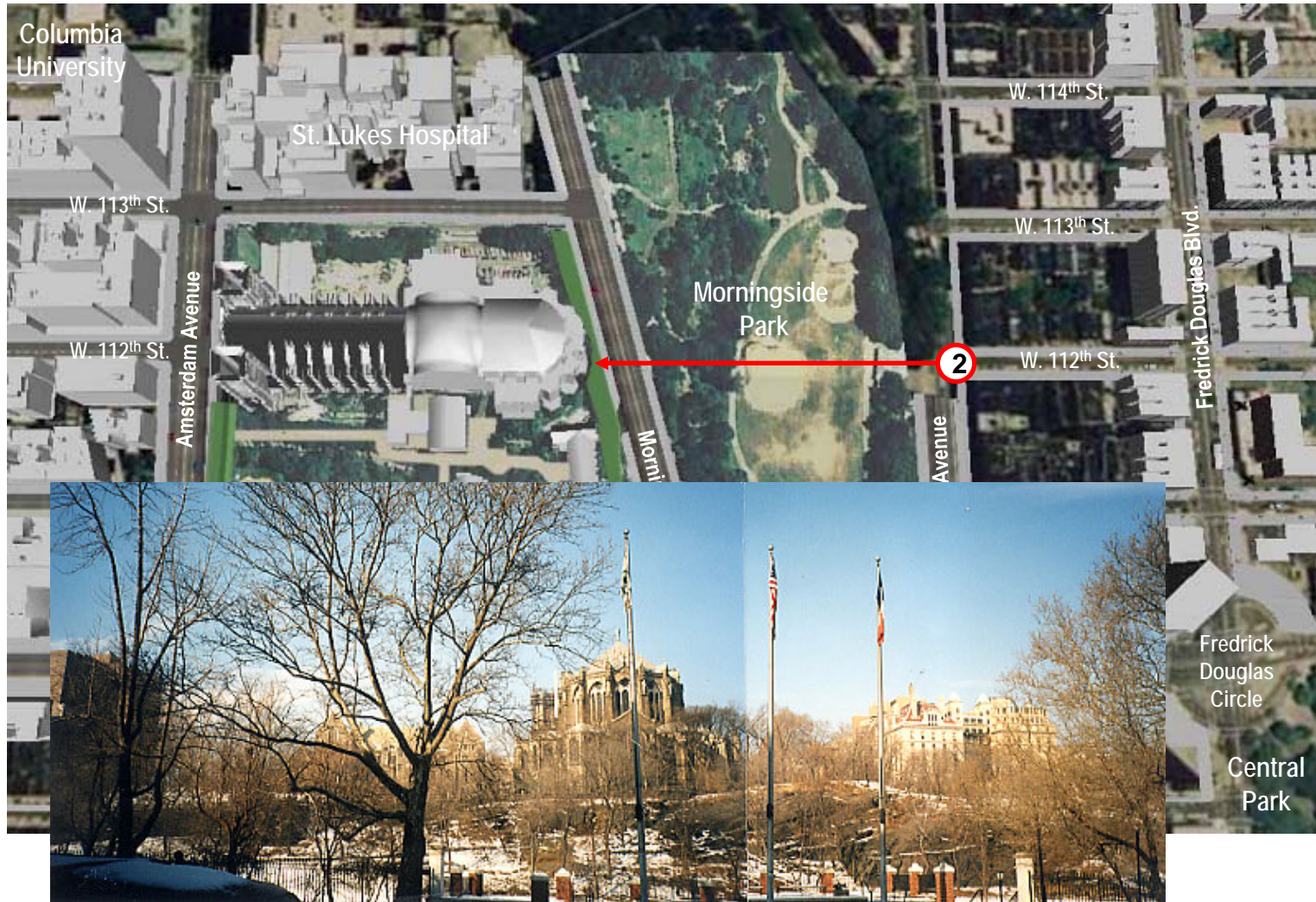


Key View Locations





ENVIRONMENTAL  
SIMULATION  
CENTER, LTD.



Key View Locations



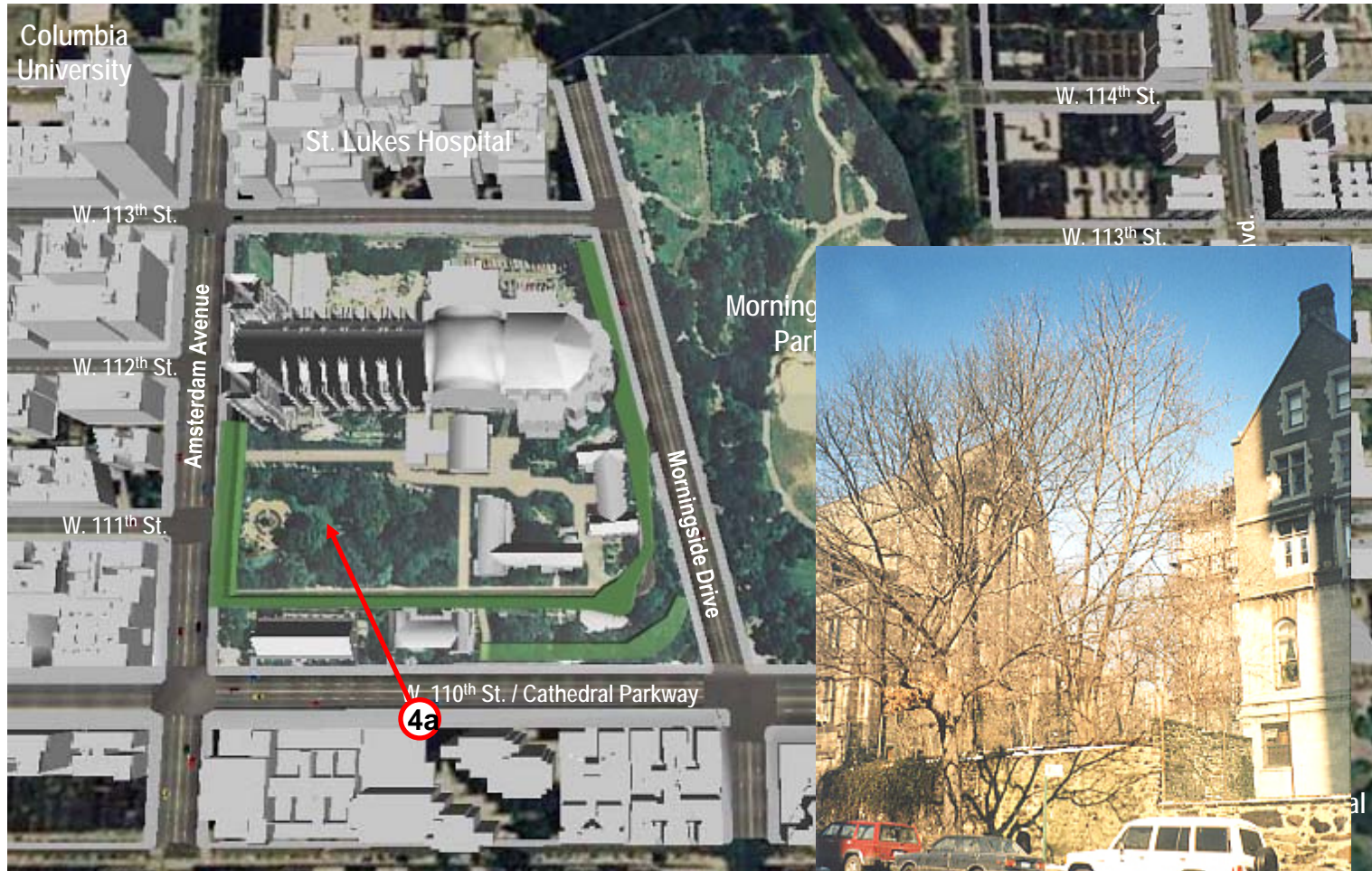
ENVIRONMENTAL  
SIMULATION  
CENTER, LTD.



Key View Locations



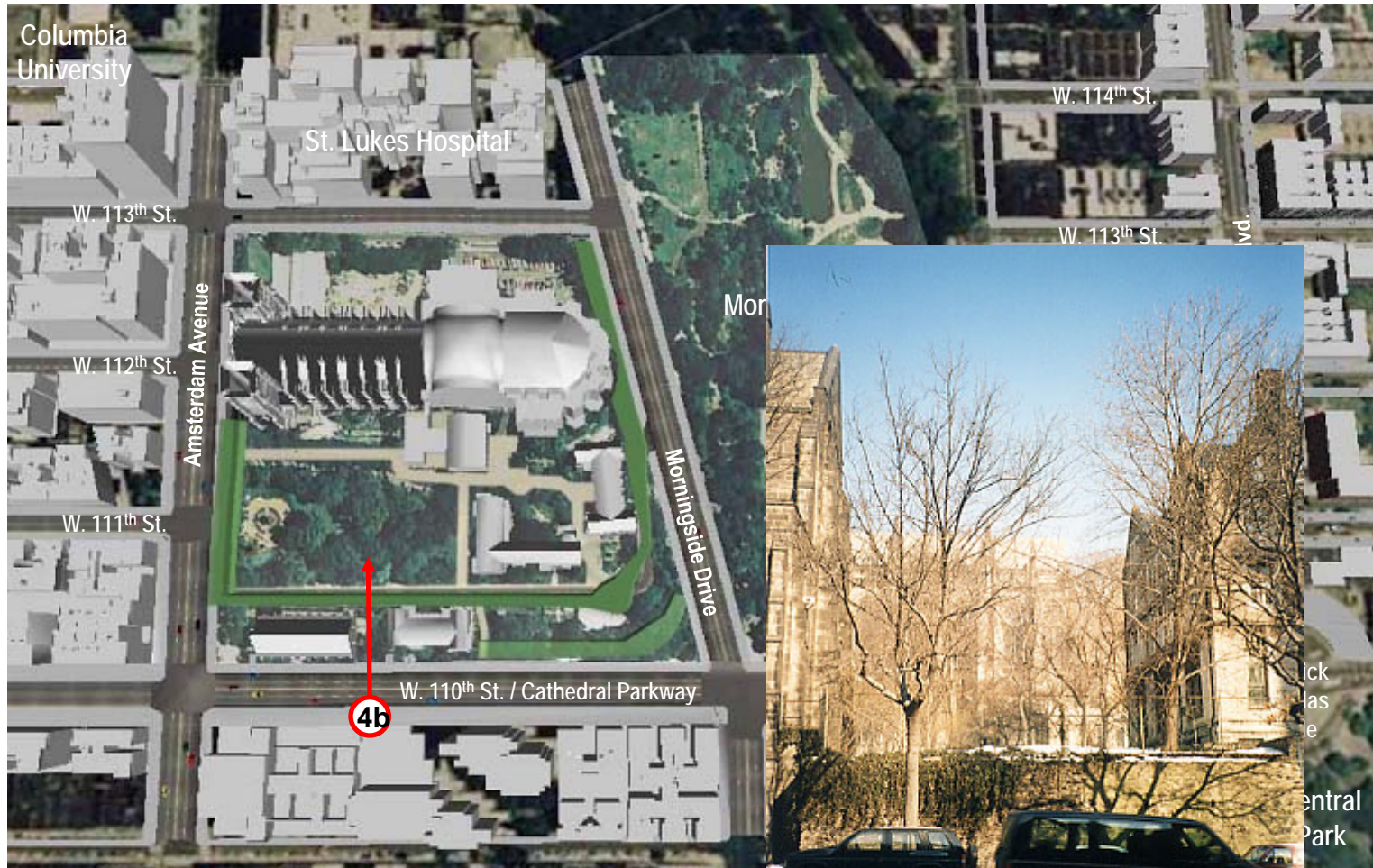
ENVIRONMENTAL  
SIMULATION  
CENTER, LTD.



Key View Locations



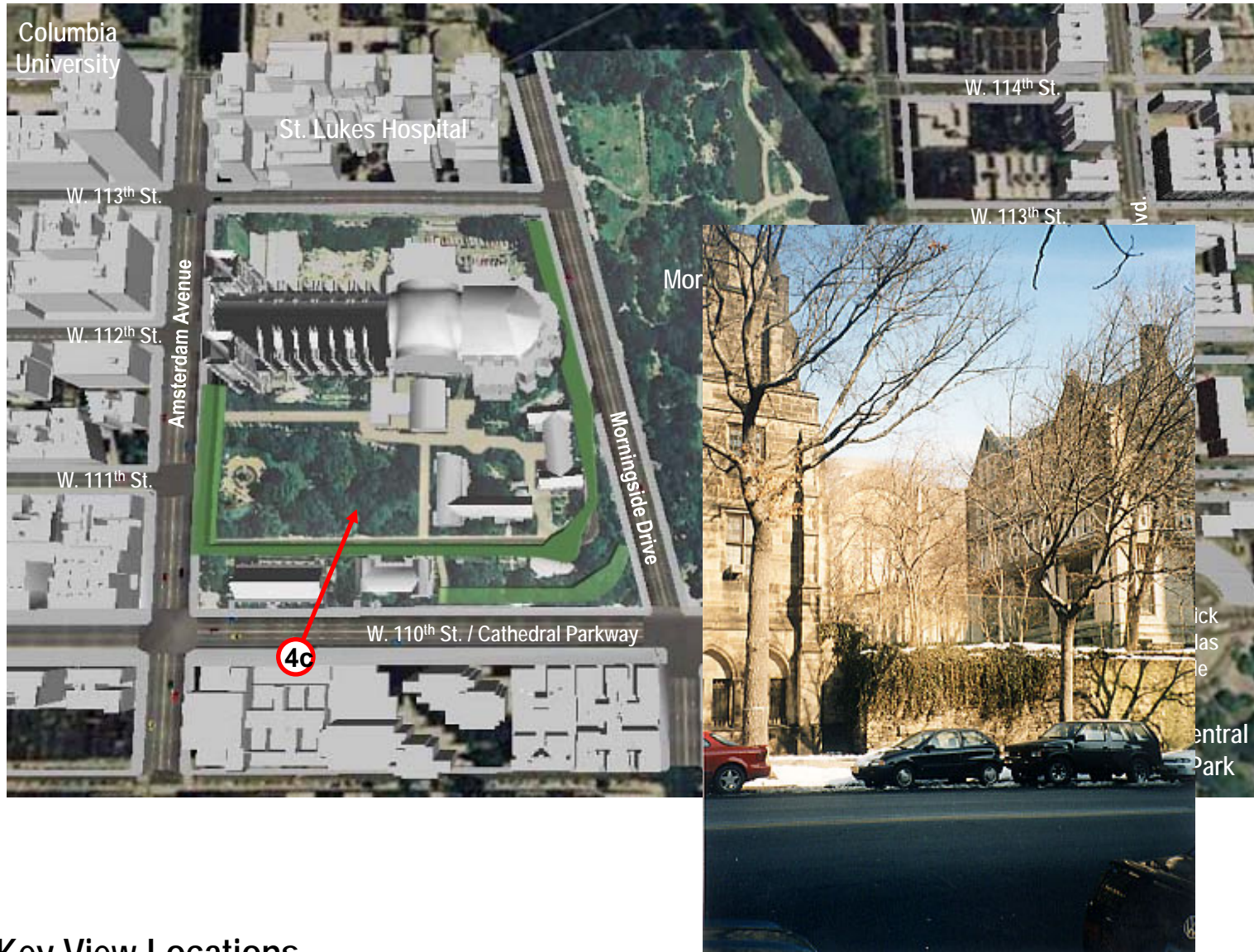
ENVIRONMENTAL  
SIMULATION  
CENTER, LTD.



Key View Locations



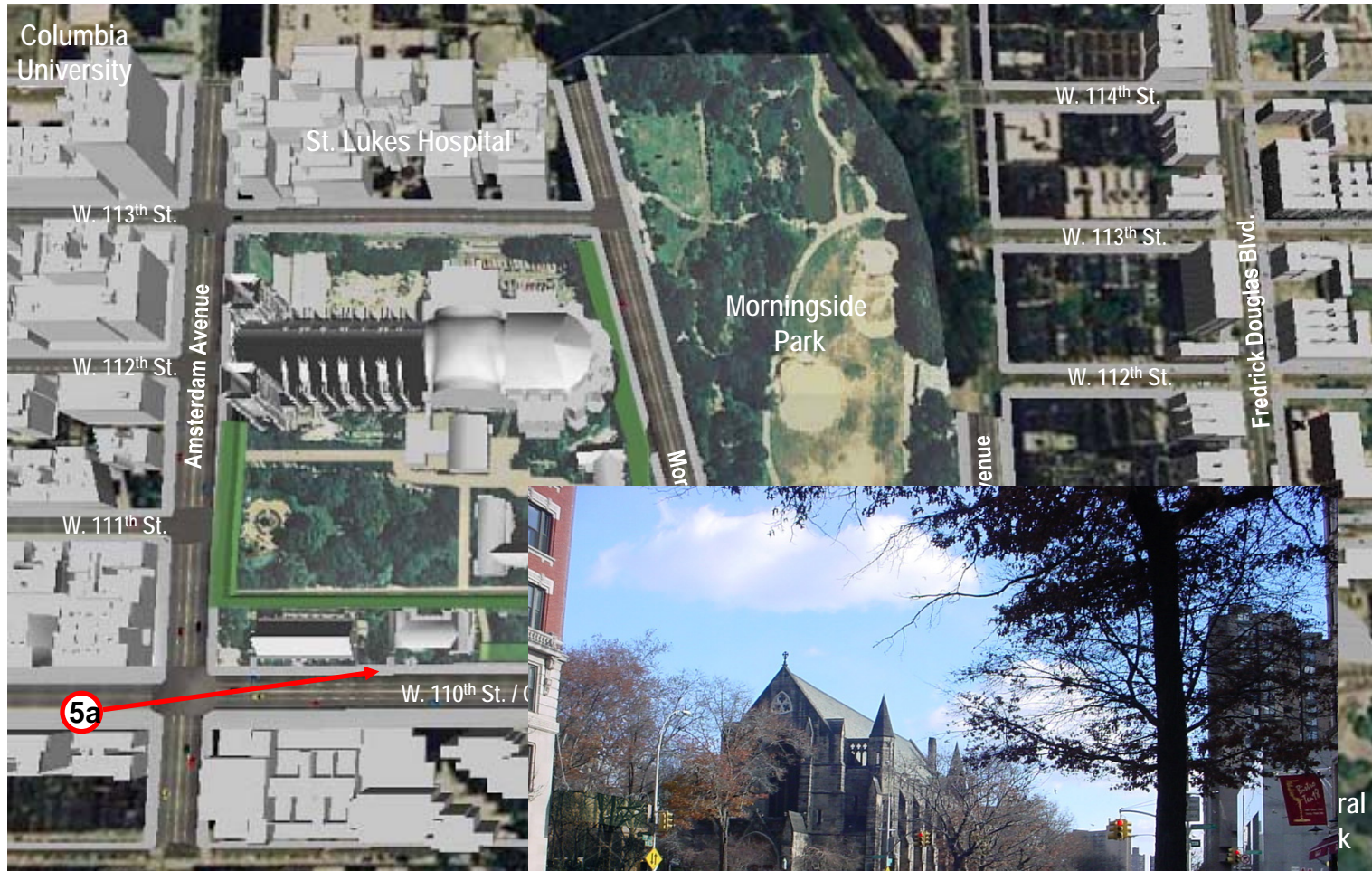
ENVIRONMENTAL  
SIMULATION  
CENTER, LTD.



Key View Locations



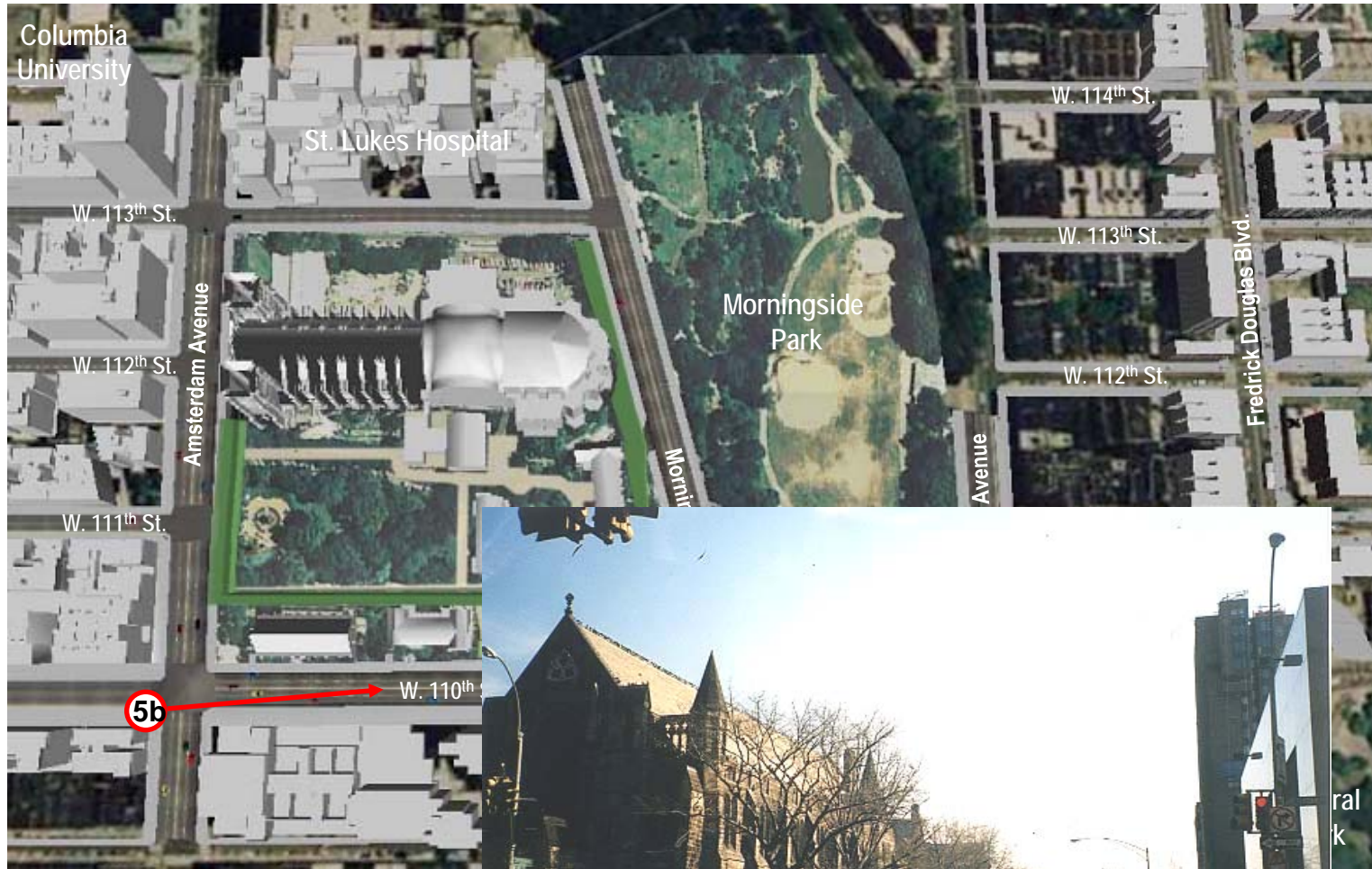
ENVIRONMENTAL  
SIMULATION  
CENTER, LTD.



Key View Locations



ENVIRONMENTAL  
SIMULATION  
CENTER, LTD.



Key View Locations



ENVIRONMENTAL  
SIMULATION  
CENTER, LTD.

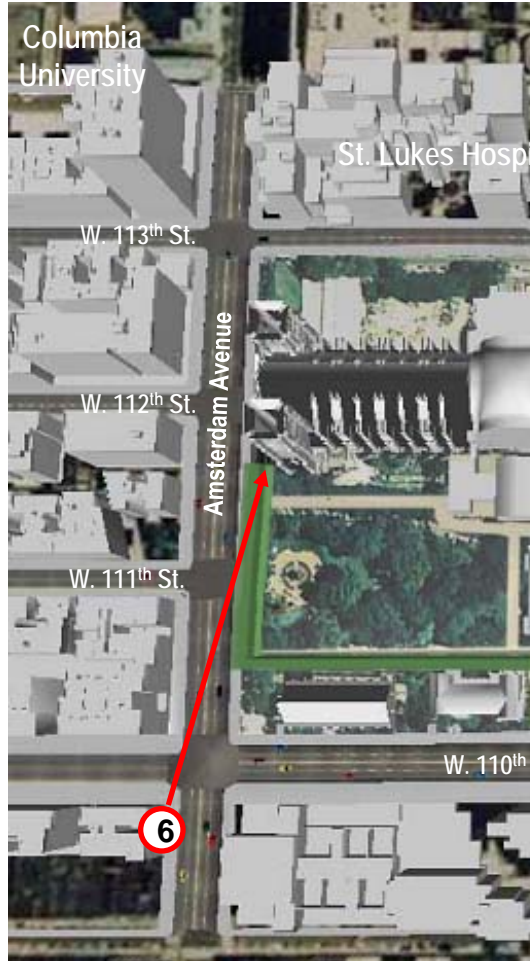


Key View Locations





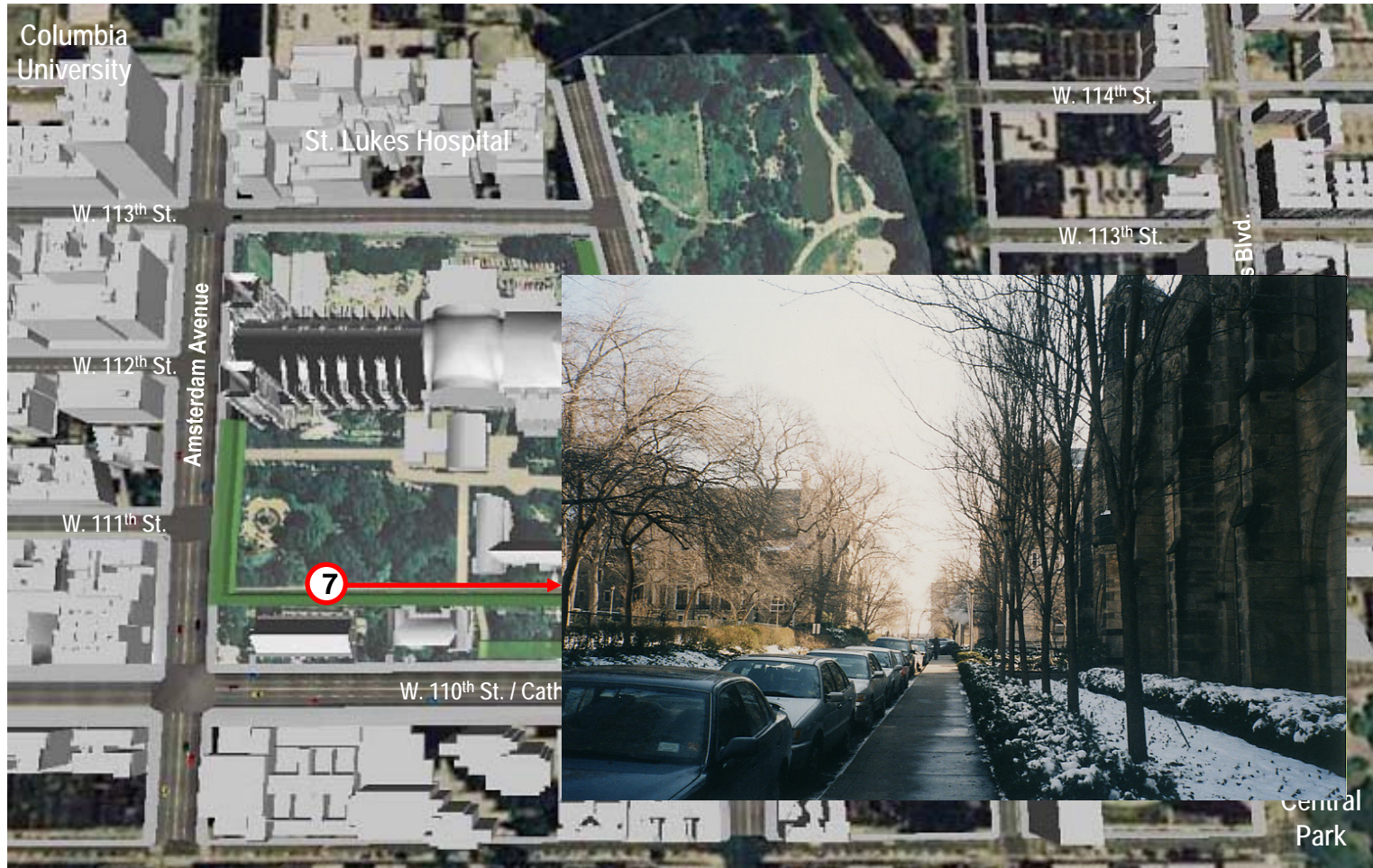
ENVIRONMENTAL  
SIMULATION  
CENTER, LTD.



Key View Locations



ENVIRONMENTAL  
SIMULATION  
CENTER, LTD.



Key View Locations



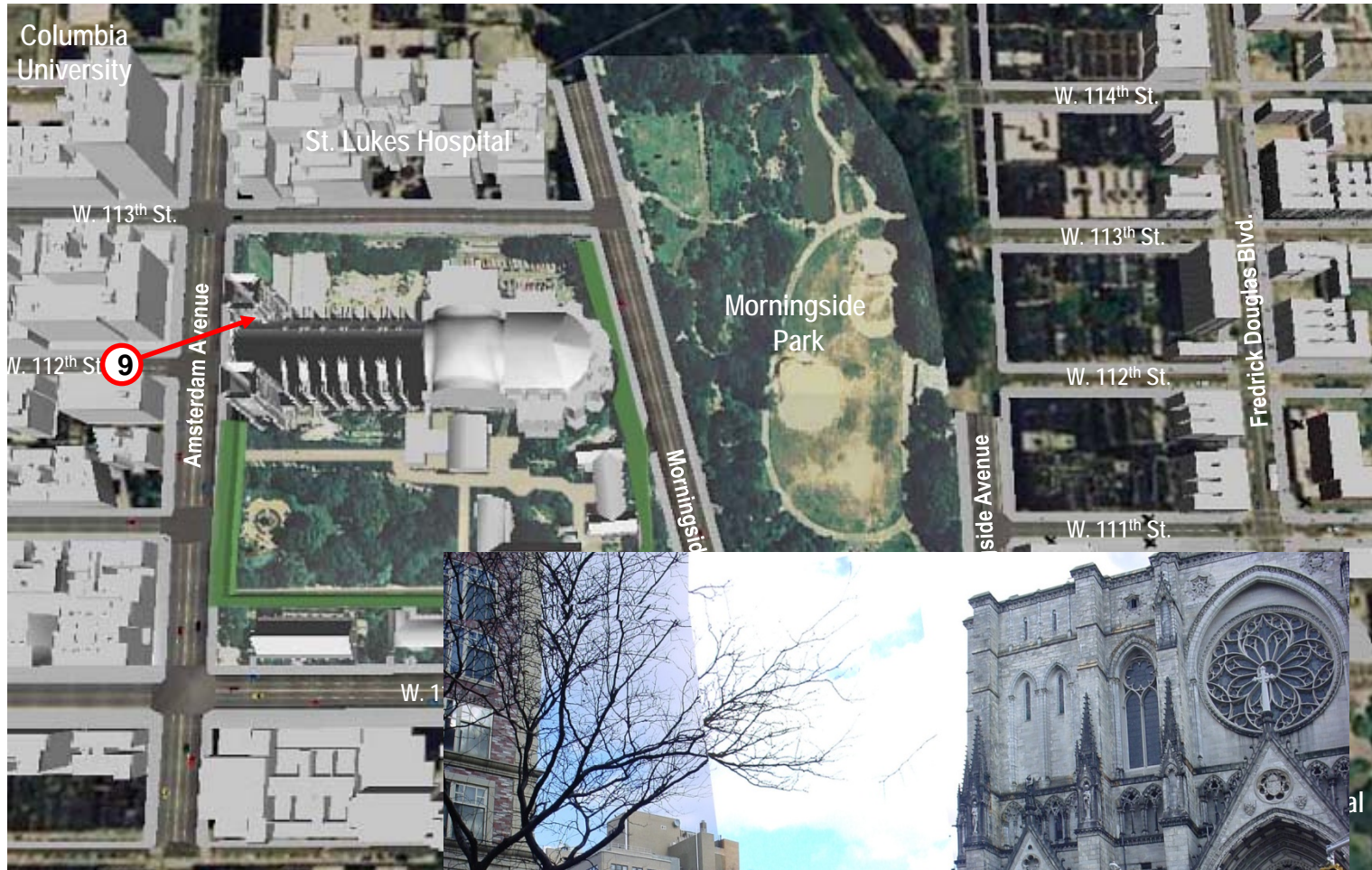
ENVIRONMENTAL  
SIMULATION  
CENTER, LTD.



Key View Locations



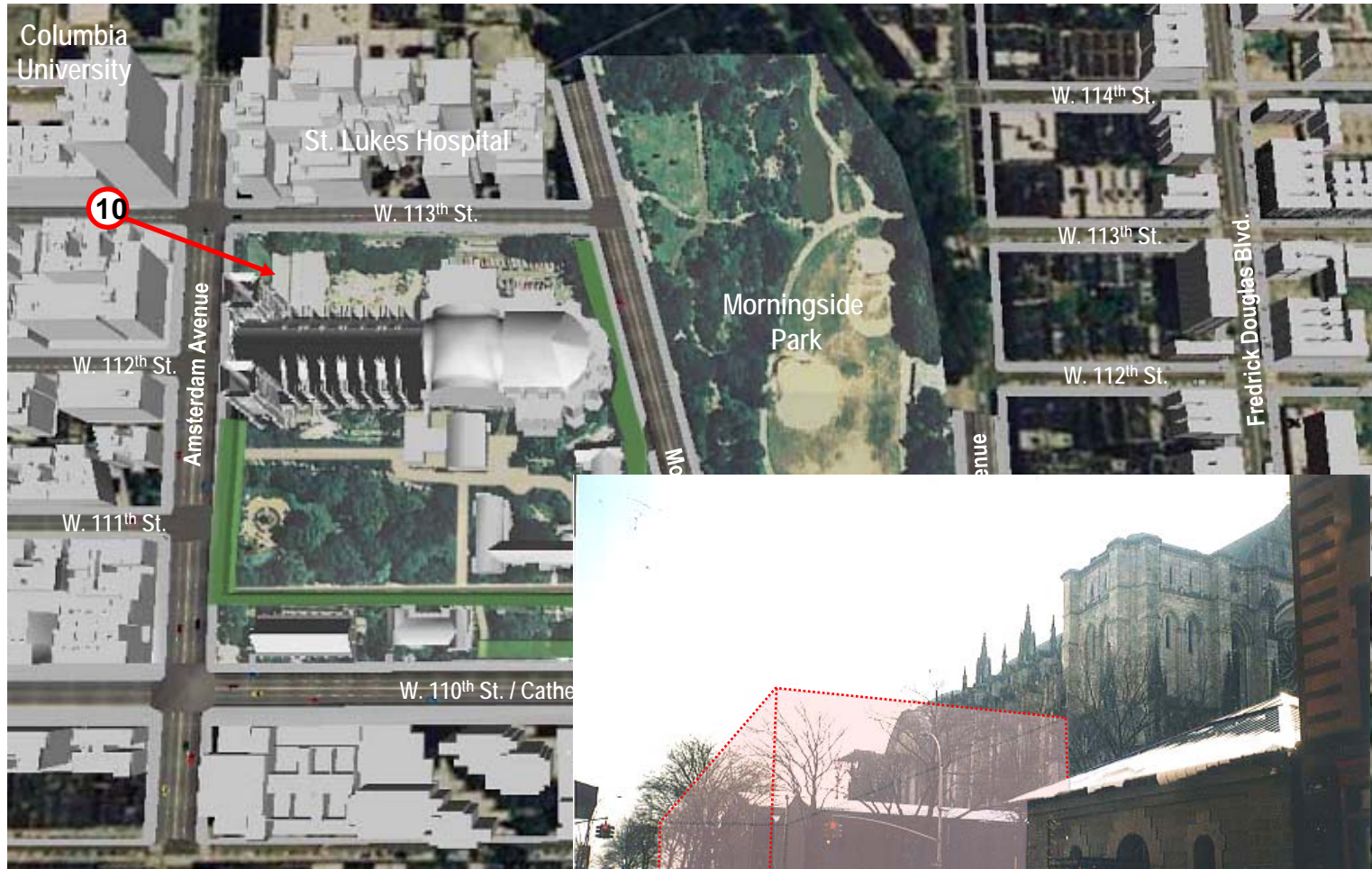
ENVIRONMENTAL  
SIMULATION  
CENTER, LTD.



Key View Locations



ENVIRONMENTAL  
SIMULATION  
CENTER, LTD.



Key View Locations



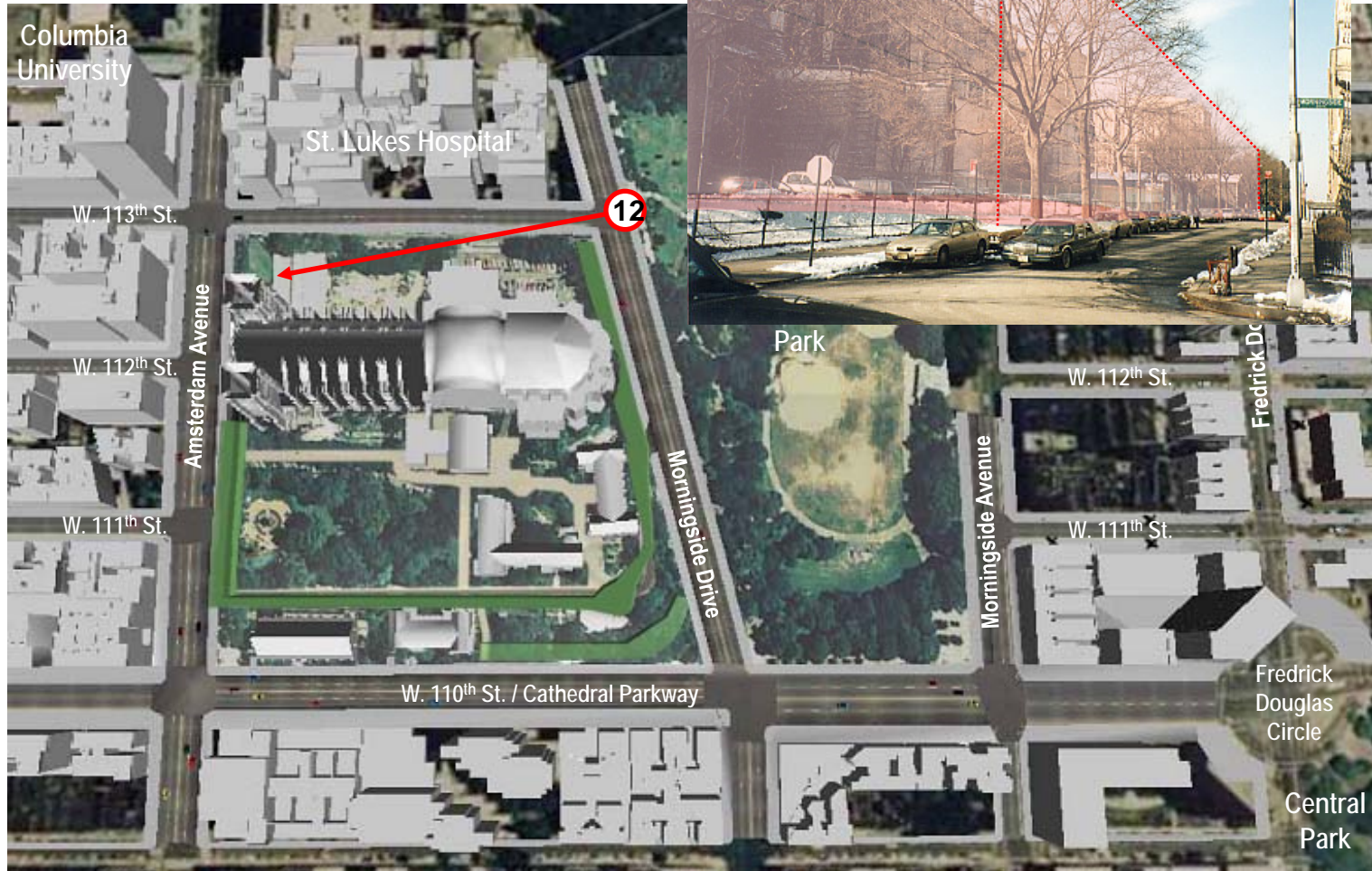
ENVIRONMENTAL  
SIMULATION  
CENTER, LTD.



Key View Locations



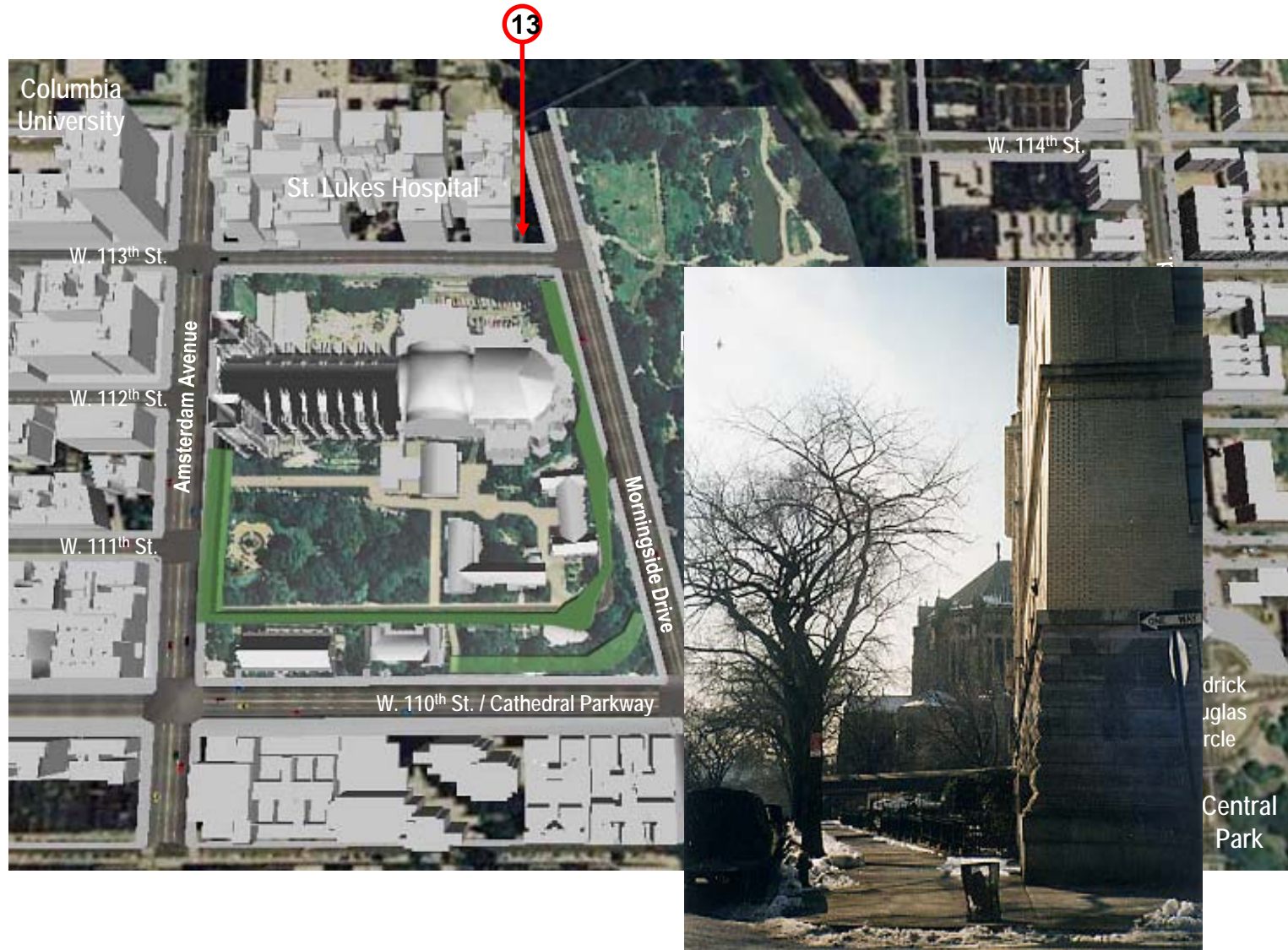
ENVIRONMENTAL  
SIMULATION  
CENTER, LTD.



Key View Locations



ENVIRONMENTAL  
SIMULATION  
CENTER, LTD.

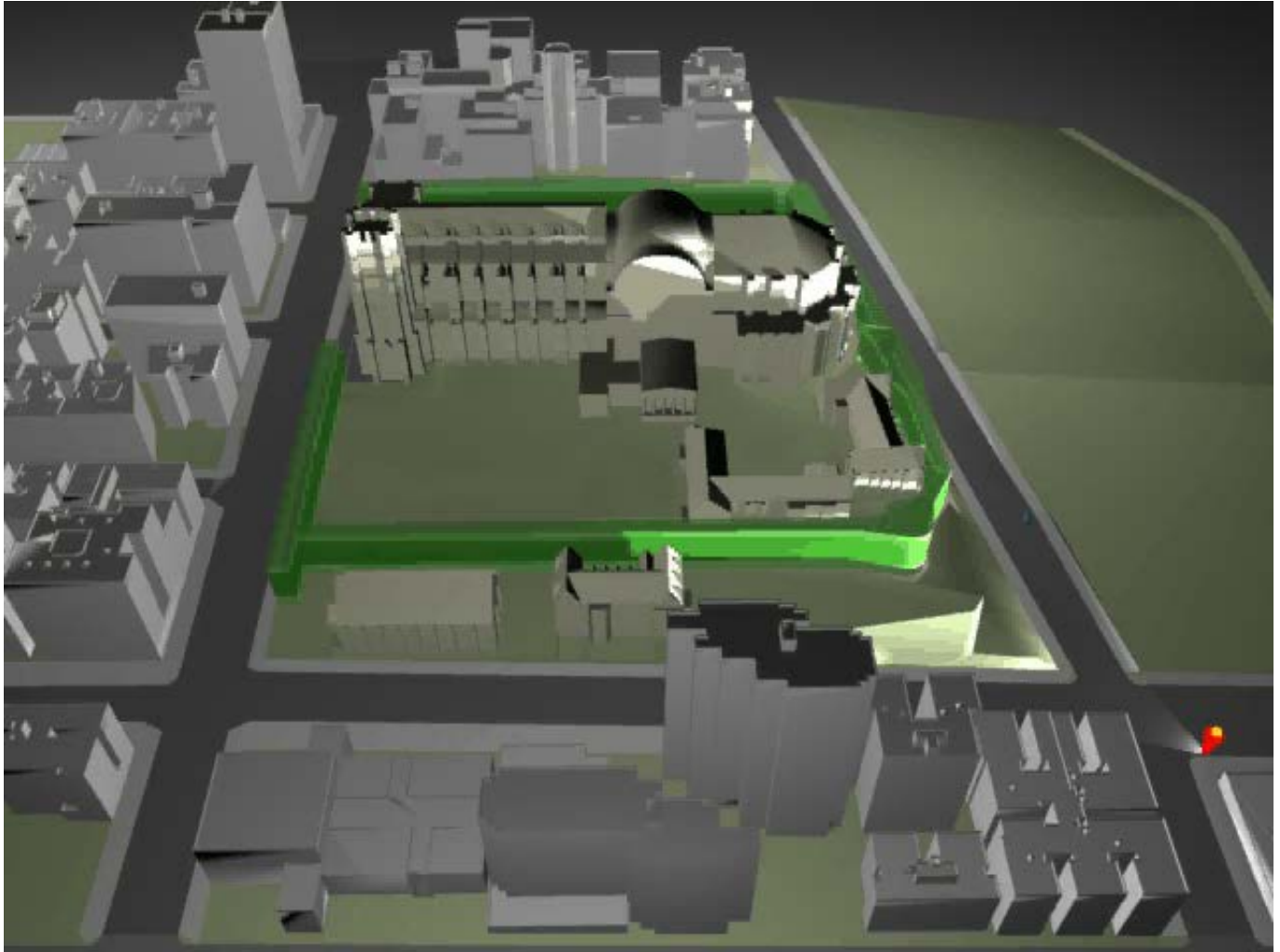


Key View Locations





ENVIRONMENTAL  
SIMULATION  
CENTER, LTD.



Seeing and Perceiving



ENVIRONMENTAL  
SIMULATION  
CENTER, LTD.



## Neighborhood Context



ENVIRONMENTAL  
SIMULATION  
CENTER, LTD.



**Neighborhood Context**



ENVIRONMENTAL  
SIMULATION  
CENTER, LTD.



## Neighborhood Context



ENVIRONMENTAL  
SIMULATION  
CENTER, LTD.



## Neighborhood Context



ENVIRONMENTAL  
SIMULATION  
CENTER, LTD.



## Neighborhood Context



ENVIRONMENTAL  
SIMULATION  
CENTER, LTD.



## Neighborhood Context



ENVIRONMENTAL  
SIMULATION  
CENTER, LTD.



## Neighborhood Context





ENVIRONMENTAL  
SIMULATION  
CENTER, LTD.

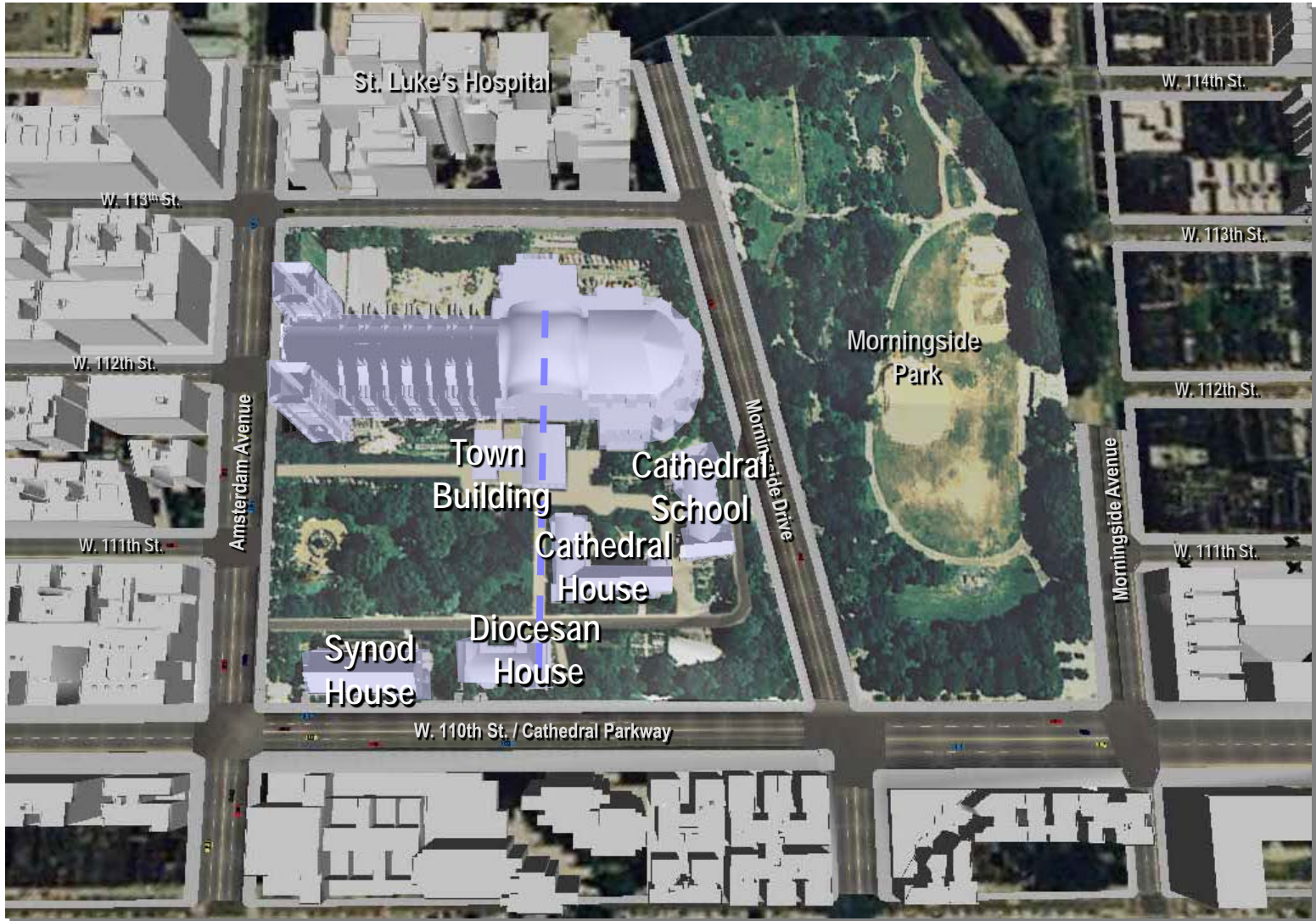


*Context*

Considerations



ENVIRONMENTAL  
SIMULATION  
CENTER, LTD.



*Mission*

Considerations



ENVIRONMENTAL  
SIMULATION  
CENTER, LTD.



*Natural Features*  
Considerations



ENVIRONMENTAL  
SIMULATION  
CENTER, LTD.



*Existing Publicly Accessible Spaces*

Considerations



ENVIRONMENTAL  
SIMULATION  
CENTER, LTD.

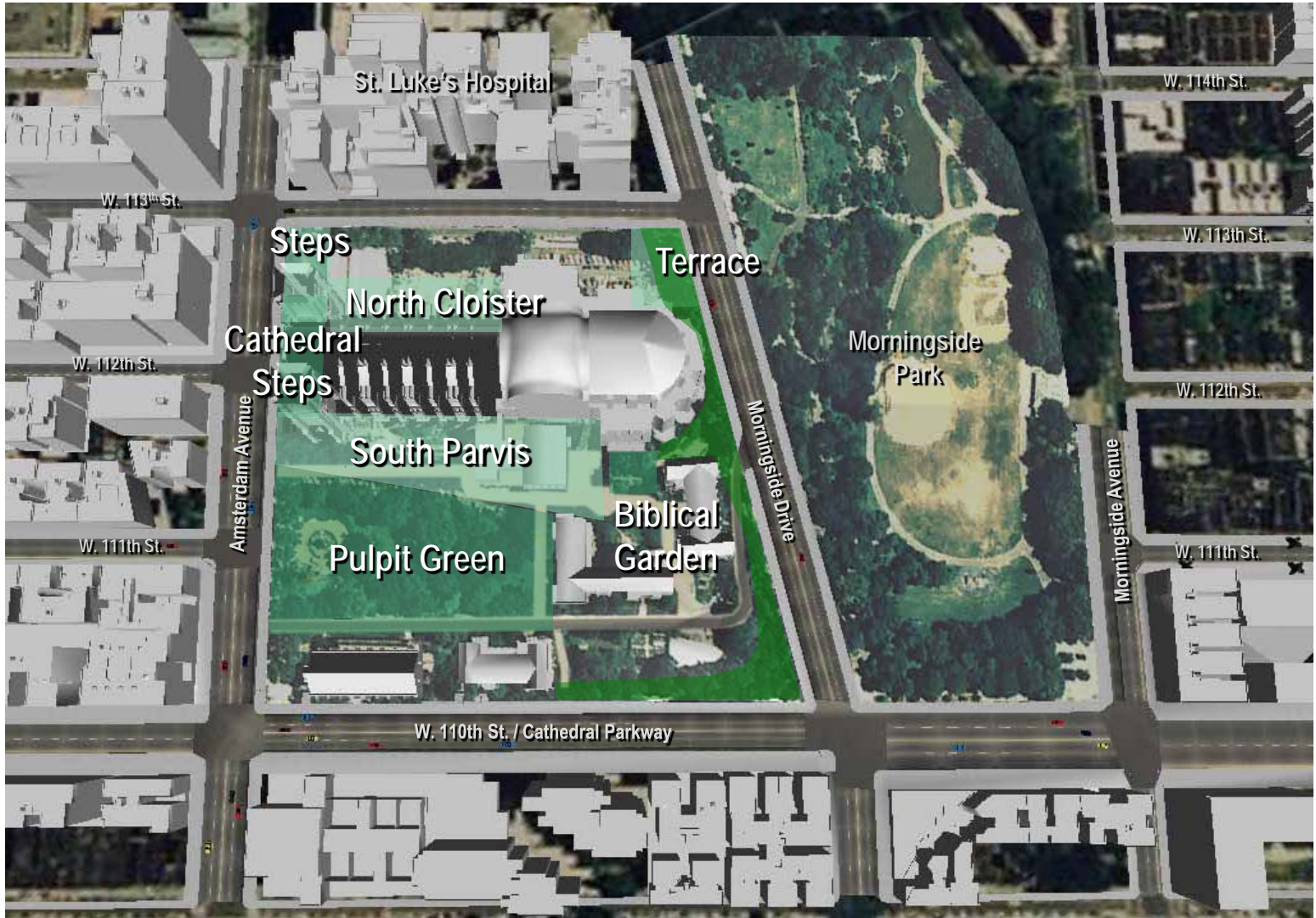


*New Publicly Accessible Spaces*

Considerations



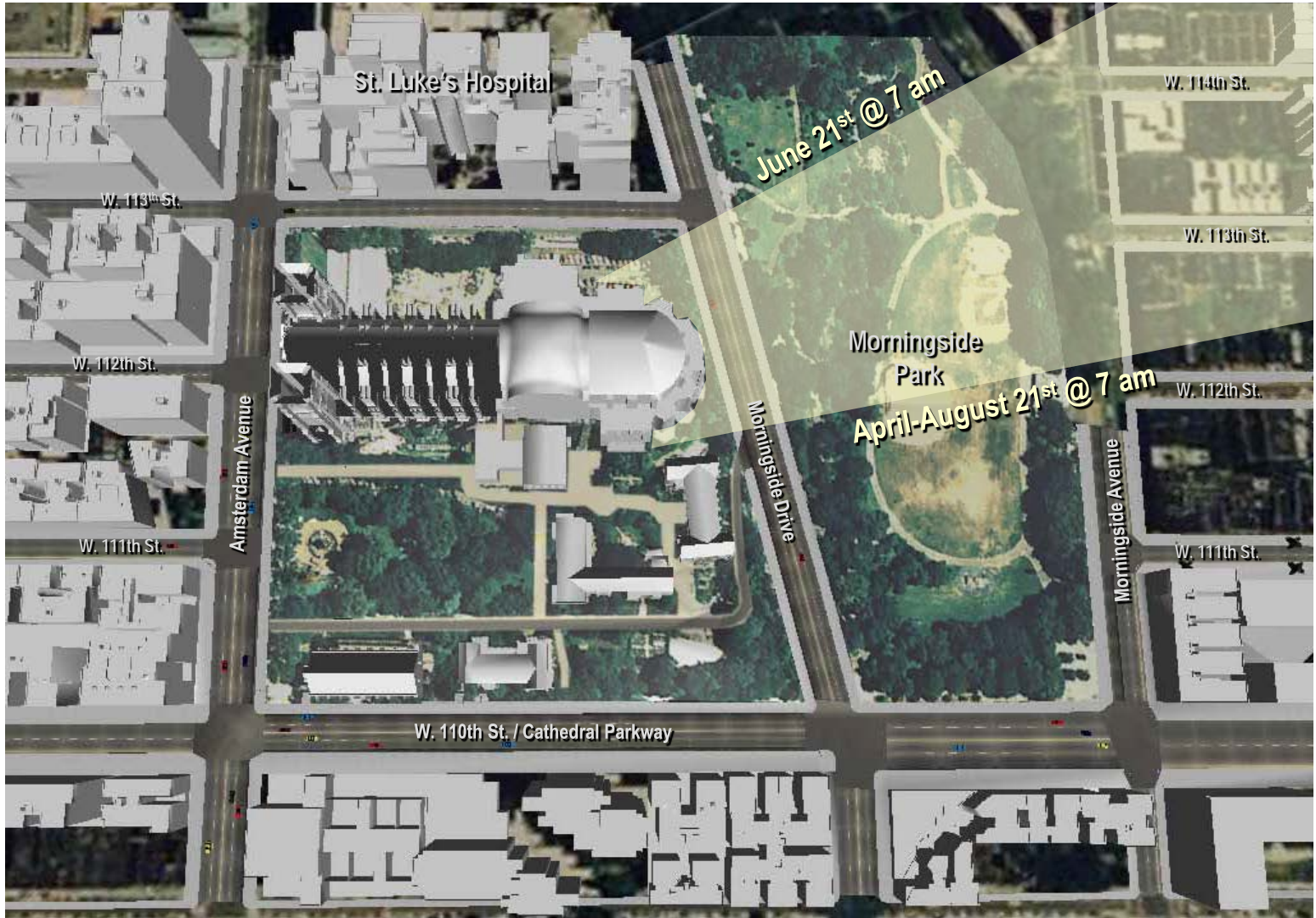
ENVIRONMENTAL  
SIMULATION  
CENTER, LTD.



*Composite: Publicly Accessible Open Space and Natural Features*  
**Considerations**



ENVIRONMENTAL  
SIMULATION  
CENTER, LTD.

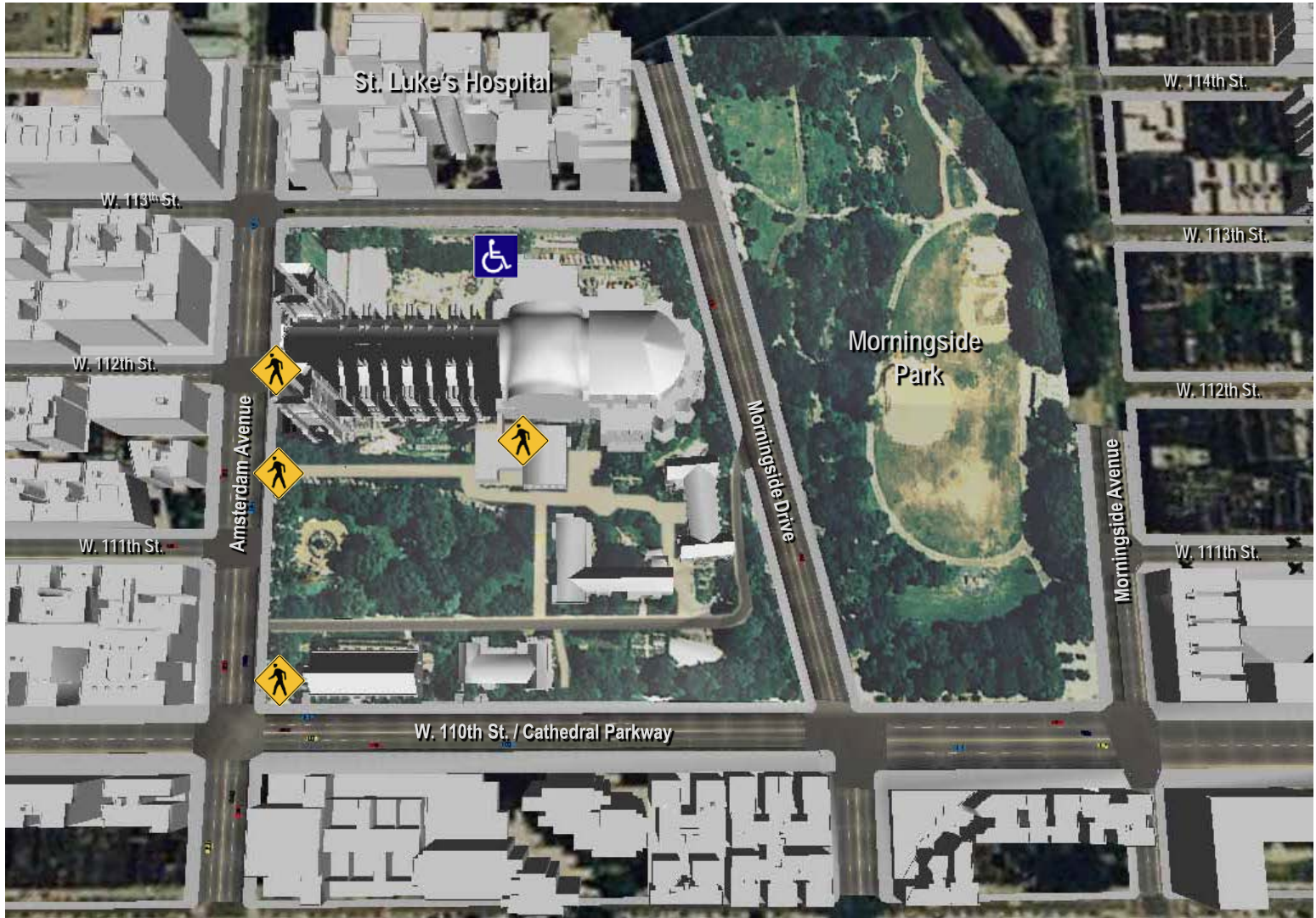


*Sunlight on the stained-glass of the apse and chapels*

**Considerations**



ENVIRONMENTAL  
SIMULATION  
CENTER, LTD.

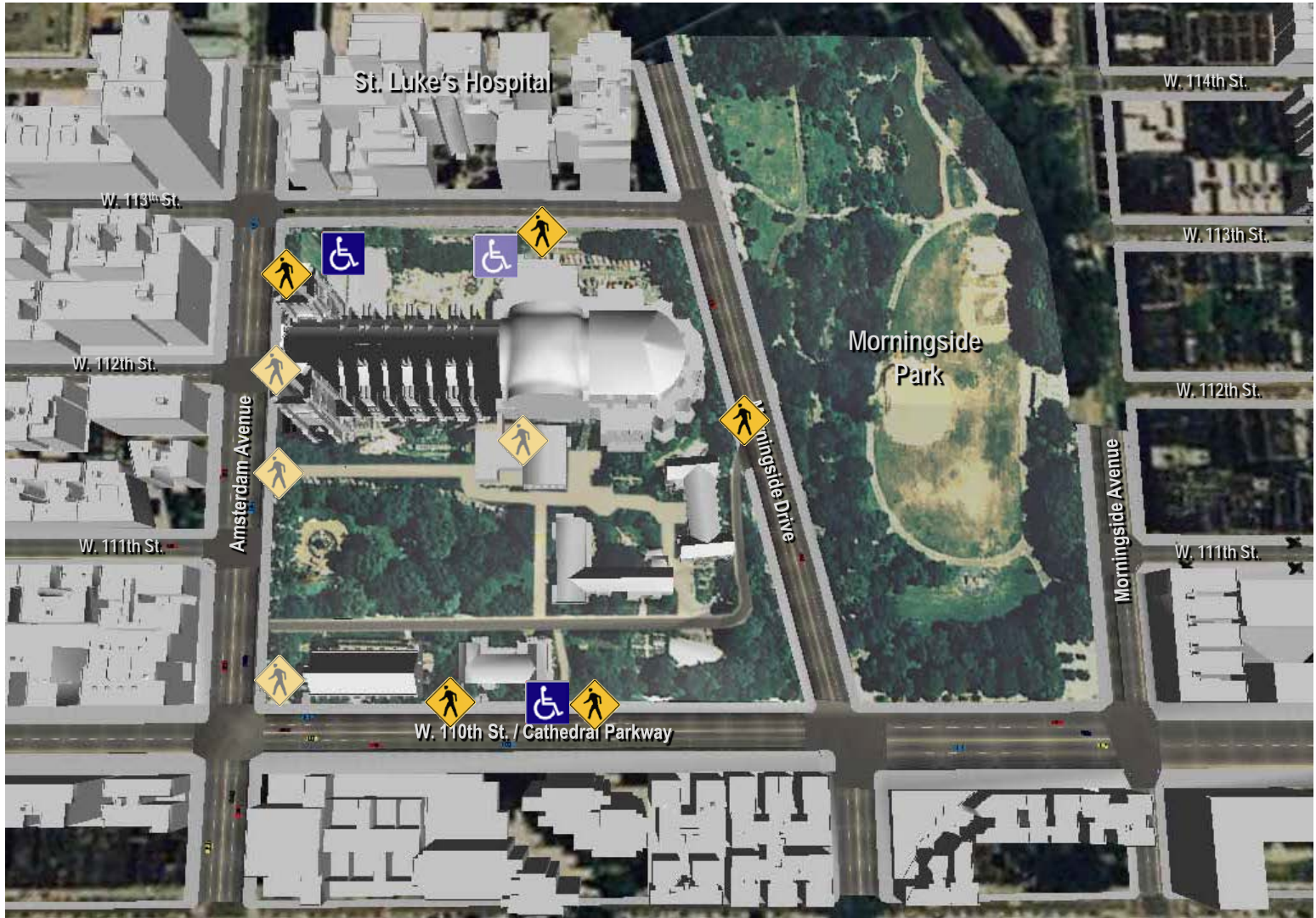


*Existing Access*  
Considerations





ENVIRONMENTAL  
SIMULATION  
CENTER, LTD.

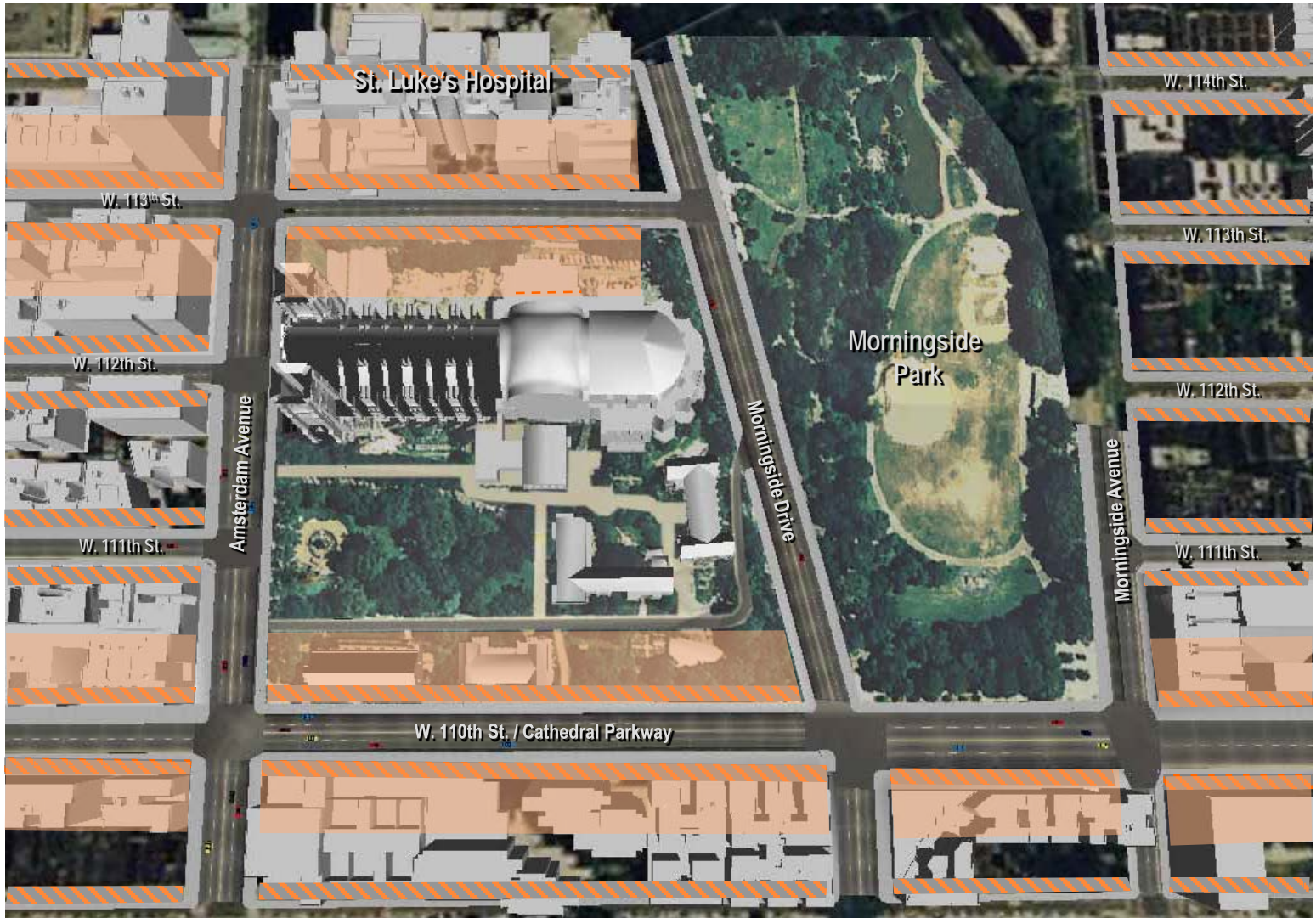


*Existing Access and New Access*

**Considerations**



ENVIRONMENTAL  
SIMULATION  
CENTER, LTD.

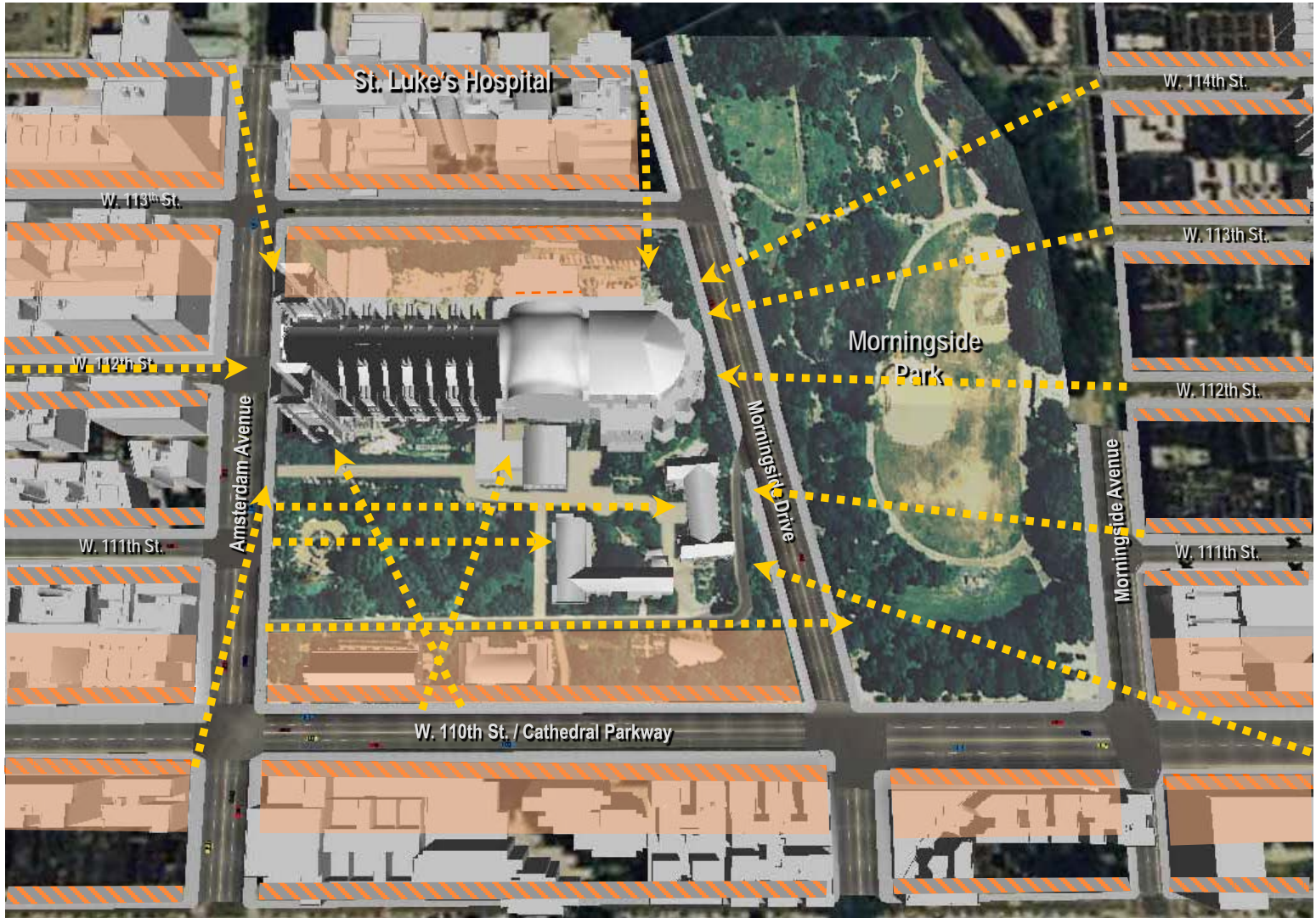


*Streetwall Continuity*

Considerations



ENVIRONMENTAL  
SIMULATION  
CENTER, LTD.

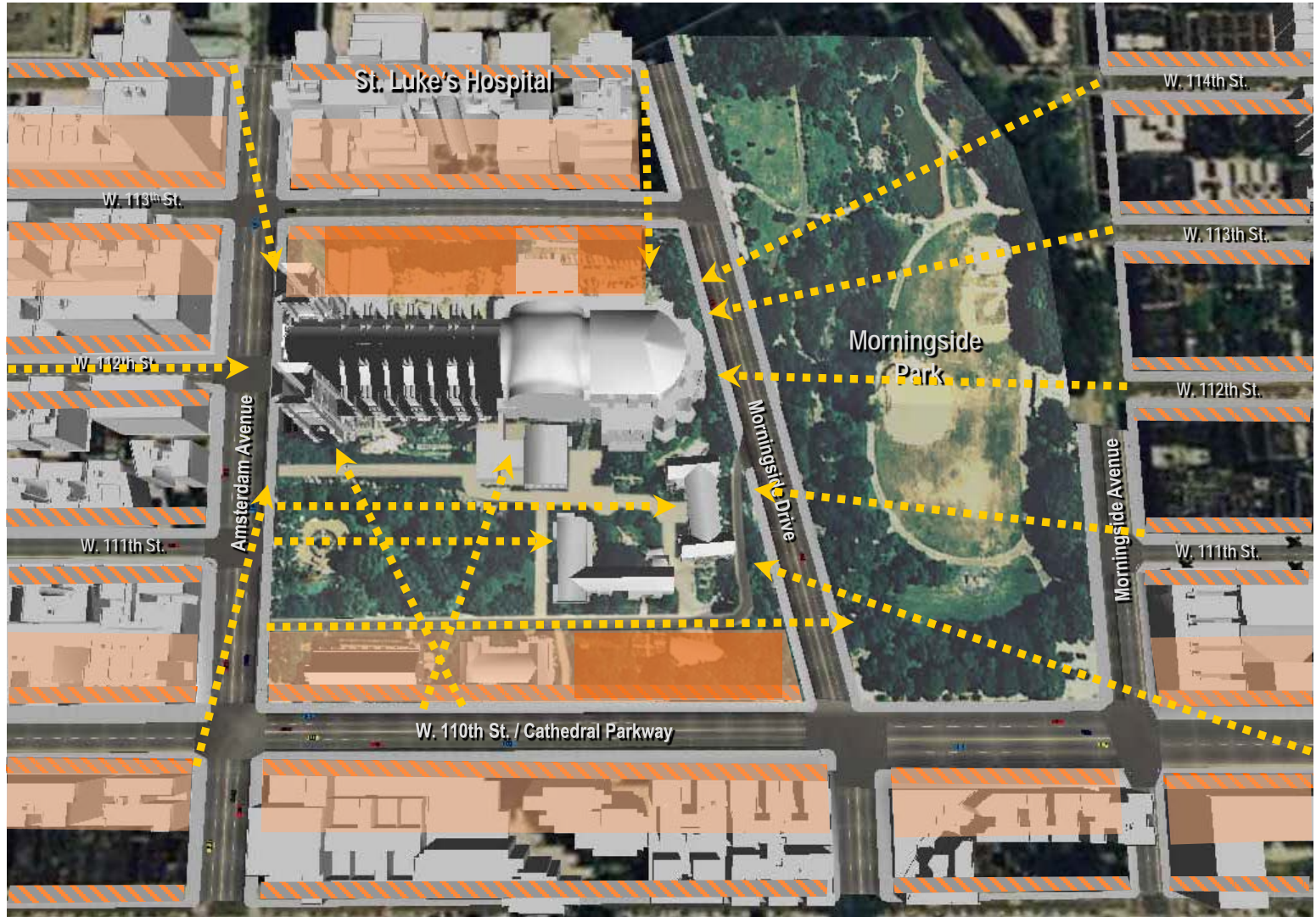


*Streetwall Continuity / Visual Access*

**Considerations**



ENVIRONMENTAL  
SIMULATION  
CENTER, LTD.



*Streetwall Continuity / Visual Access / Envelope Footprints*

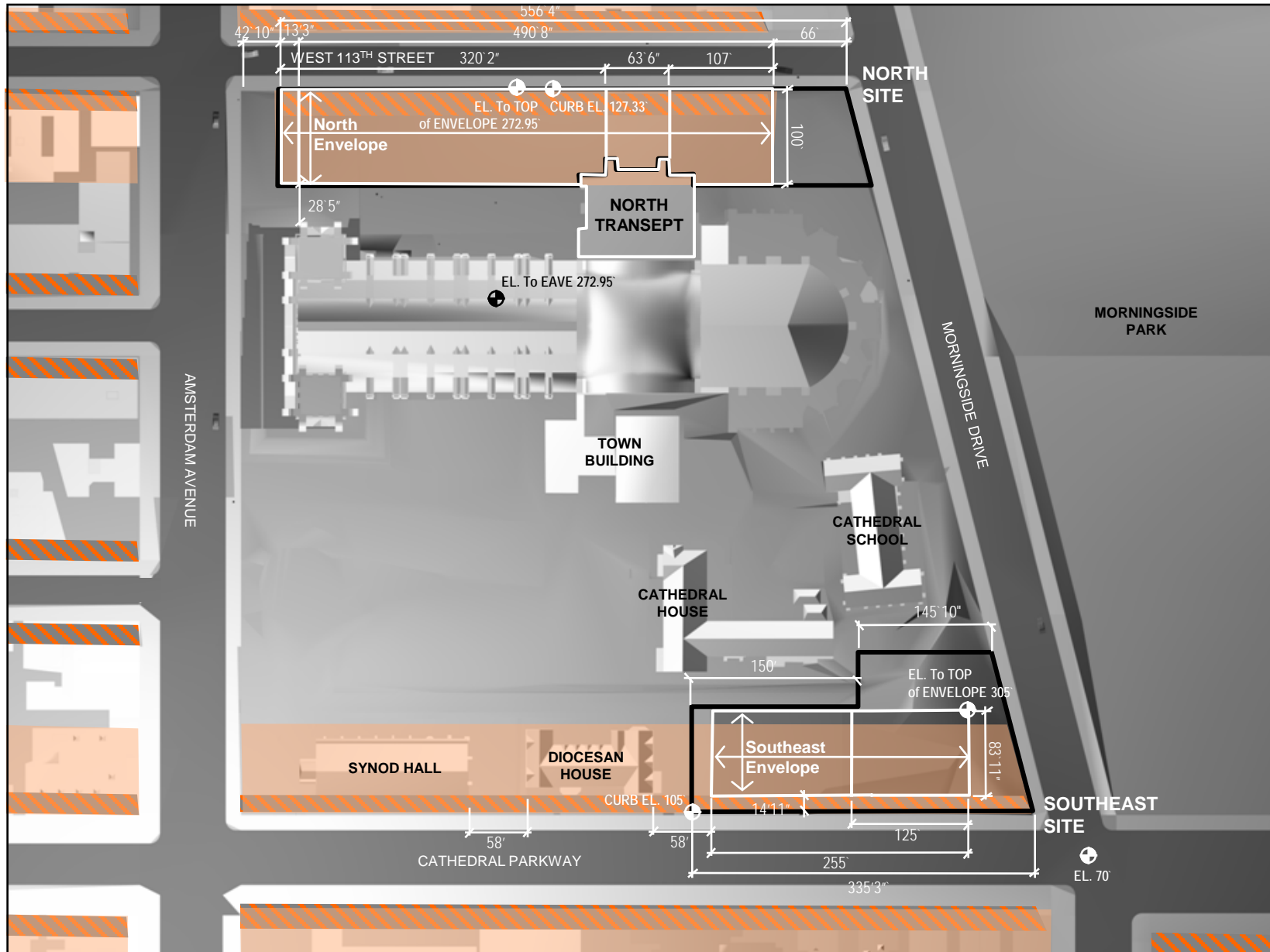
**Considerations**



ENVIRONMENTAL  
SIMULATION  
CENTER, LTD.



Scale in Feet  
0 40 80

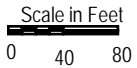
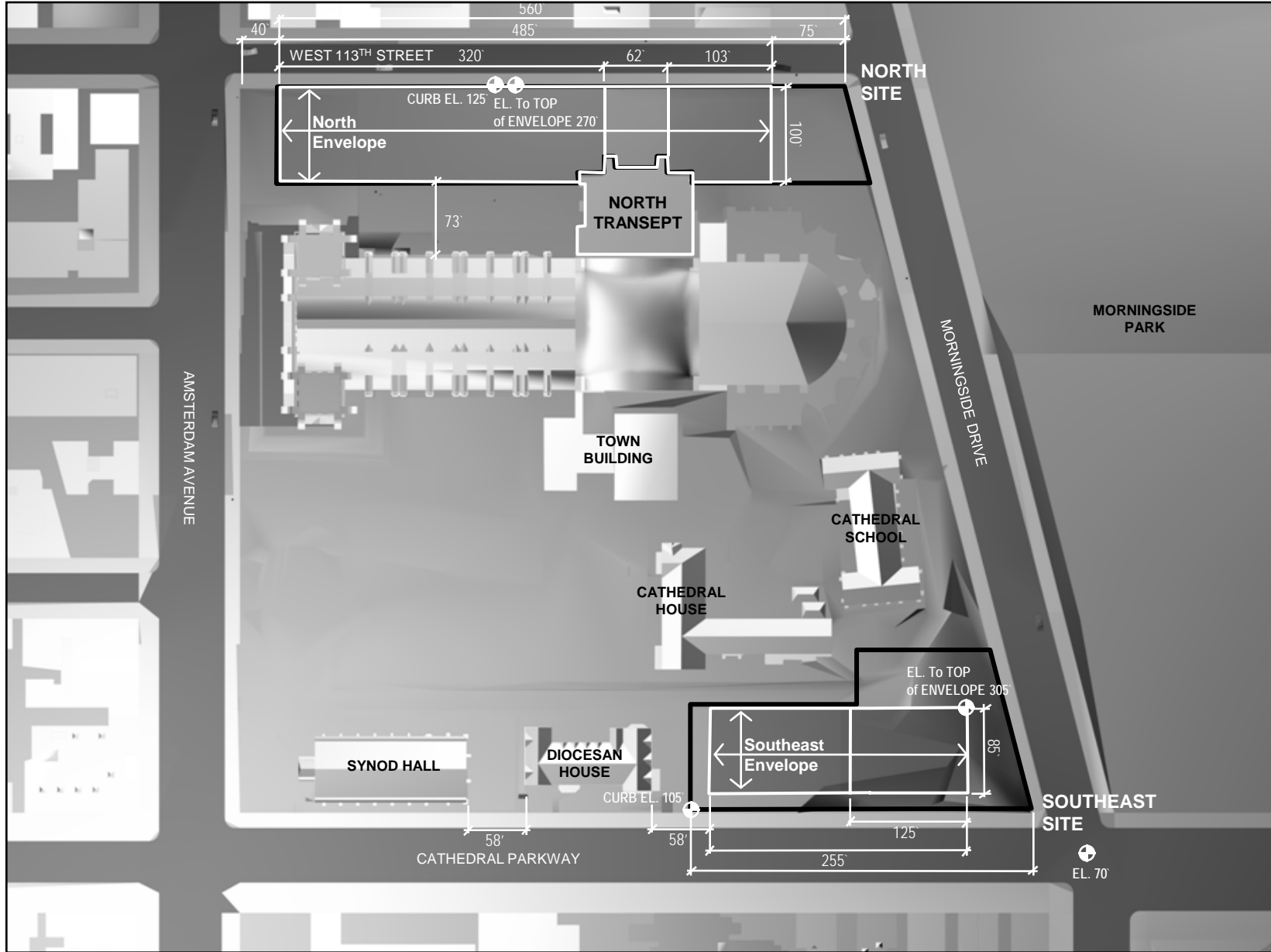


Plan View – North & Southeast Sites and North Transept

Heights and elevations are based on  
Fire Underwriters Maps and  
the Site Survey completed in 27 November 1986 and  
Metes&Bounds diagrams as of 21 May 2003.



ENVIRONMENTAL  
SIMULATION  
CENTER, LTD.

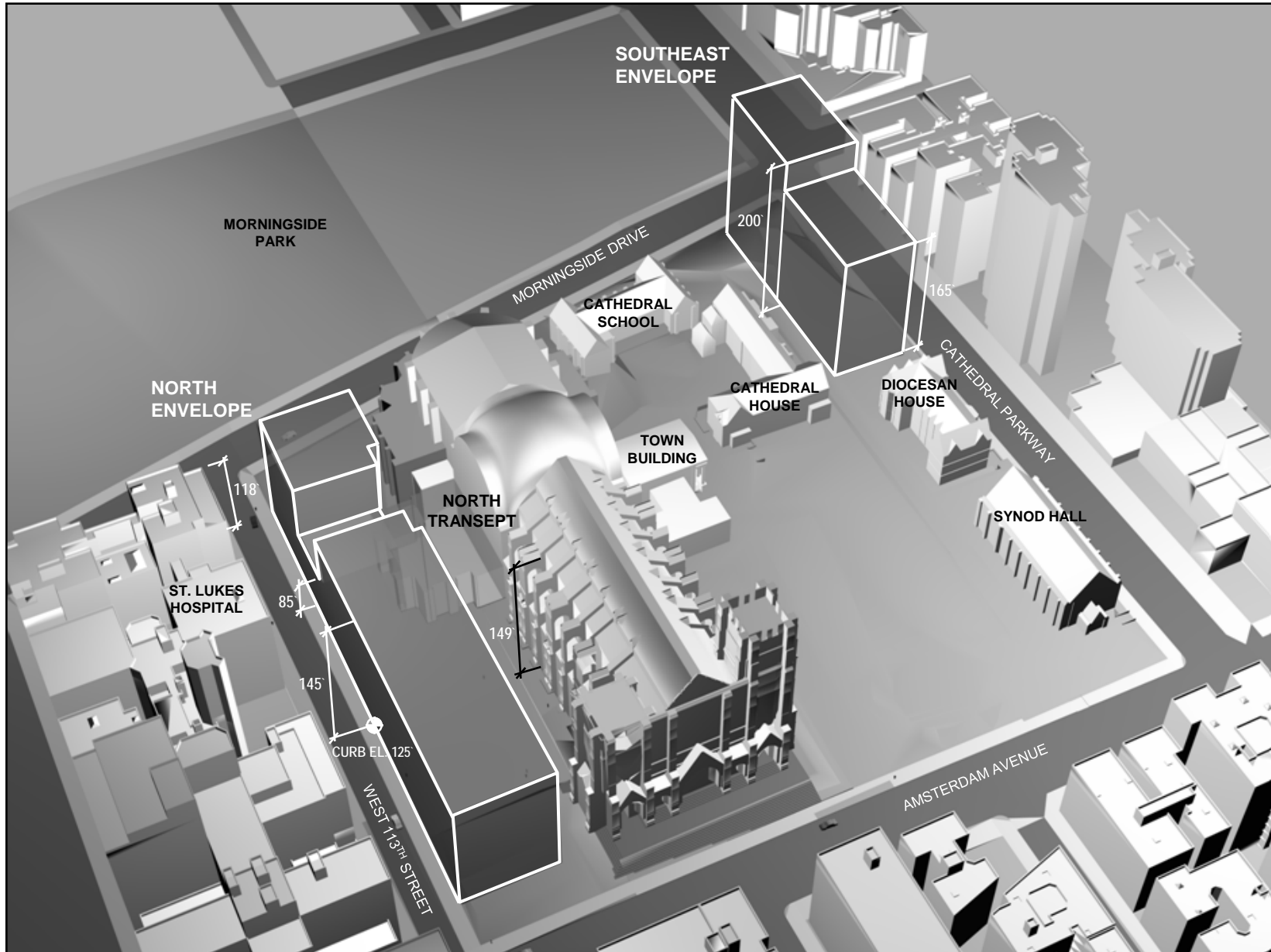


Plan View – North & Southeast Sites and North Transept

Heights and elevations are based on Fire Underwriters Maps and the Site Survey completed in 27 November 1986.



ENVIRONMENTAL  
SIMULATION  
CENTER, LTD.

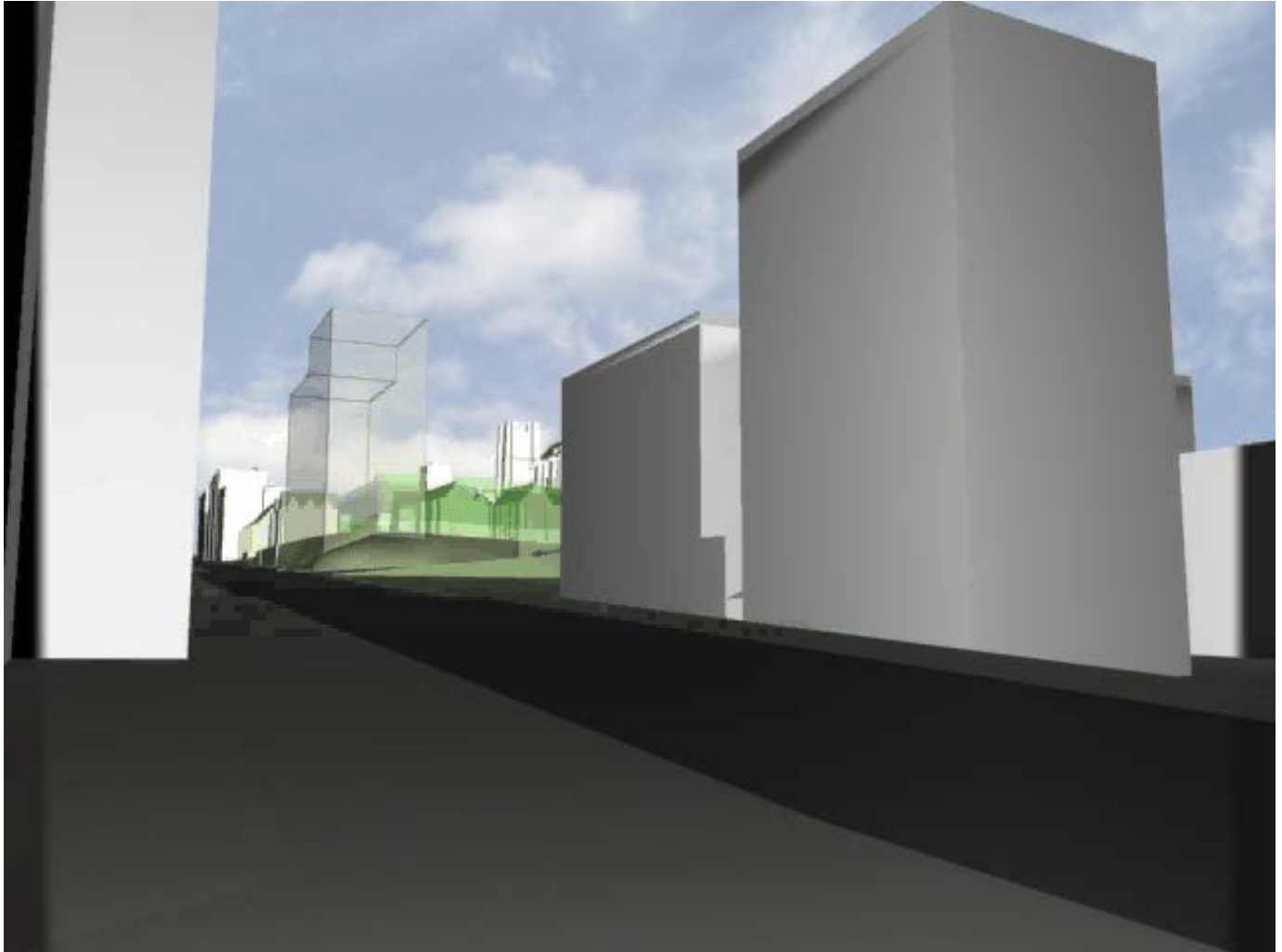


**Aerial View – North & Southeast Envelopes and North Transept**

Heights and elevations are based on  
Fire Underwriters Maps and  
the Site Survey completed on 27 November 1986.



ENVIRONMENTAL  
SIMULATION  
CENTER, LTD.



Proposed Envelopes





ENVIRONMENTAL  
SIMULATION  
CENTER, LTD.





ENVIRONMENTAL  
SIMULATION  
CENTER, LTD.

<http://www.simcenter.org>