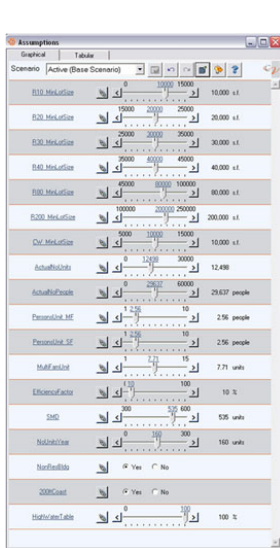
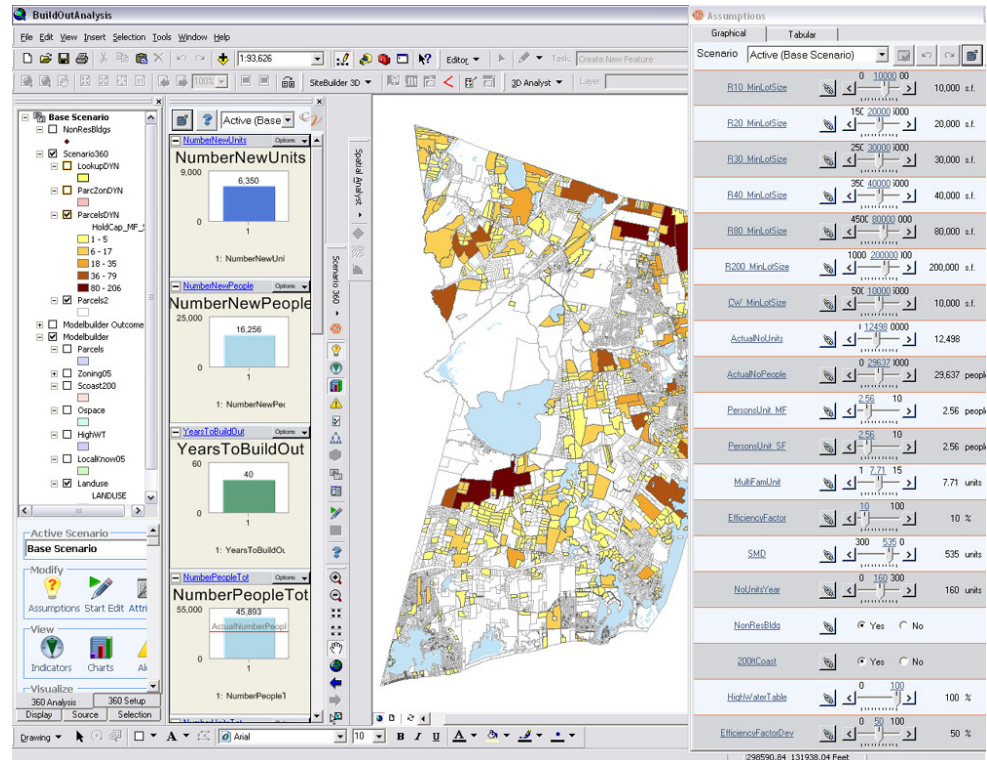


Town of South Kingstown Build-Out Tool

South Kingstown, Rhode Island



Assumption Panel with Slider Bar



In 2005, the Town of South Kingstown, Rhode Island engaged the Environmental Simulation Center (“ESC”) to develop a tool to show ultimate town build-out under current zoning densities.

Client:
Town Of South Kingstown

Co-Project Directors:
Michael Kwartler
George James

Completed:
2005

The ESC developed the model in the Scenario 360 extension of CommunityViz™ so that the model integrated with the Town’s GIS. Designed to be automated, so that no “hand-changes” were required, the system was still flexible and extensive, taking into account current development, wetlands, coastal buffer zones, high water tables, existing non-conforming uses and a variety of other assumptions. Assumptions could be turned on or off or adjusted via a “slider bar” so the Town could simulate the effect of policy changes on the results of the Build-Out Model before they were actually changed. The design of the model was developed working closely with Town staff to understand what they considered to be important to how development within the Town actually occurred.

The ESC developed and implemented the model, migrated it to the Town’s information systems, trained Town staff and developed user documentation.